

Record of Land Corner Monumentation

Sections 1 & 12 Township 4N Range 25E Code T4N R25E E23

County Morrow Date September 17, 2015

History of Original Corner Establishment:

The corner was first established in 1869 by J. B. David in Original GLO Survey of Township 4 North, Range, 26 East under Contract No. 131.

Record Reads: Set Post in Mound for 1/4 Corner to Sections 1 & 12.

C. Albert White completed a Dependent Resurvey in 1968.

Record Reads: Set 28" x 2 1/2" Iron Post with Brass Cap 24" in the ground.

Description of evidence found:

Found 2 1/2" Iron Post, Brass Cap was Gone. The Iron Post was bent and I dug down to below a point in the the bend to establish the best location of the center of the pipe. The Iron Post fell in the center of alignment for a Proposed Roadway and would be Destroyed by Construction.

Description of monumentation and accessories established to perpetuate the location of this Section Corner:

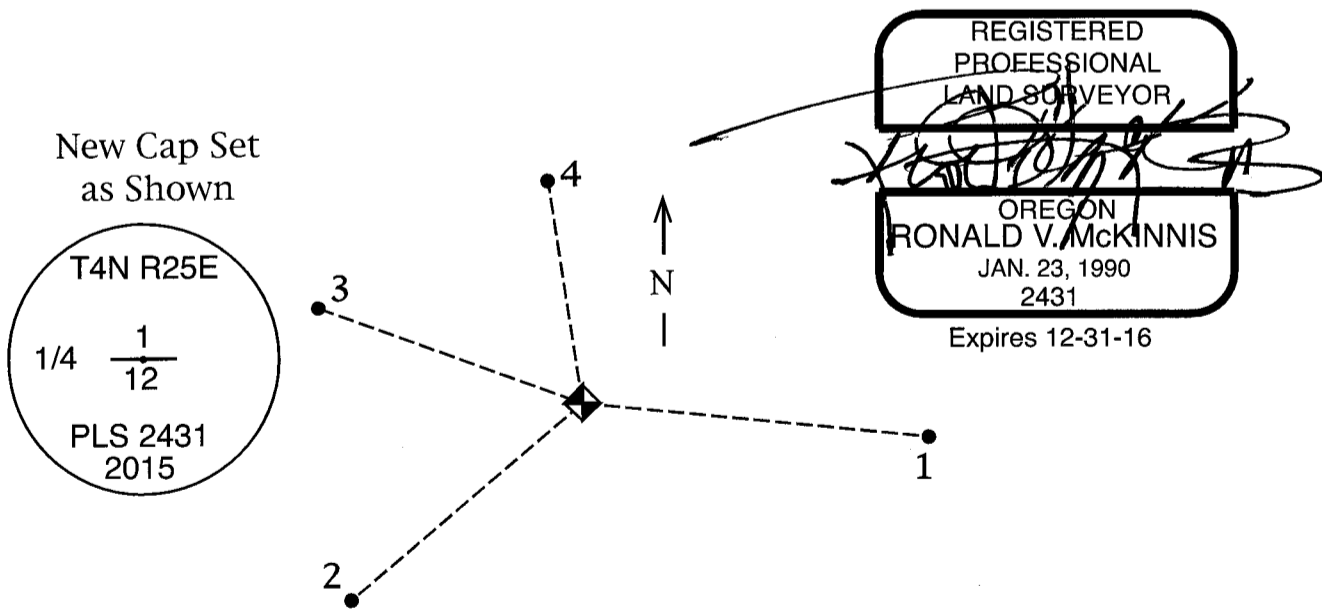
I Referenced and Removed the Iron Post Set by White Prior to Construction. After Construction I Reset a New Monument, 2 1/2" Brass Cap on 1 1/2" x 30" Iron Pipe, at the Referenced Corner Location inside an Aluminum Monument Box in the Center Line of Completed Road, Lewis & Clark Drive.

In addition, the following Bearing Objects were Tagged with Bearing Object Placards and a Washer Stamped PLS 2431 as follows:

All Bearings & Distances are to the Center of the Stamped Washer.

- 1 - A Steel Pole for Street Light bears S 81° 20' 55" E 224.87 feet.
- 2 - A Steel Pole for Parking Lot Light bears S 65° 26' 18" W 139.64 feet.
- 3 - A Steel Pole for Street Light bears N 53° 05' 45" W 45.98 feet.
- 4 - A Wood Power Pole bears N 06° 31' 35" W 155.60 feet.

All directions on placards are given to the set monument.



Office of County of Morrow

State of Oregon I hereby certify that the within instrument was

filed in this office for record on the 22 day of October, 2015

County Surveyor by Steph K. Hallock Survey Number 4N 25 E 23

(COUNTY OFFICIAL) (DEPUTY)