

OREGON CORNER RESTORATION FORM

SECTION 23 TOWNSHIP 4 NORTH RANGE 24 EAST N-17

COUNTY : MORROW DATE 2-1998
 FILED: 9-2005

CORNER DESIGNATION

NW COR.

- CONDITION REPORT ONLY
- NOT FOUND
 - RENEWED
 - UNCOVERED
 - X SURVEYED IN
 - X REFERENCED

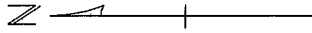
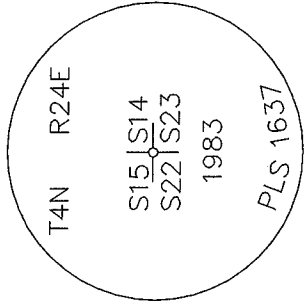
PREVIOUS RENEWALS / SURVEYS, ETC.

ORIGINAL SURVEY BY THOMPSON ET AL UNDER CONTRACT #131 IN 1869.
 1965 SURVEY BY ASCHER SET 3" O.D. IN ERROR.
 1981 WELLS SET 2"X20" I.P.
 1983 GRIFFIS & WIGHTMAN SET 3" BRASS CAP IN CONC.

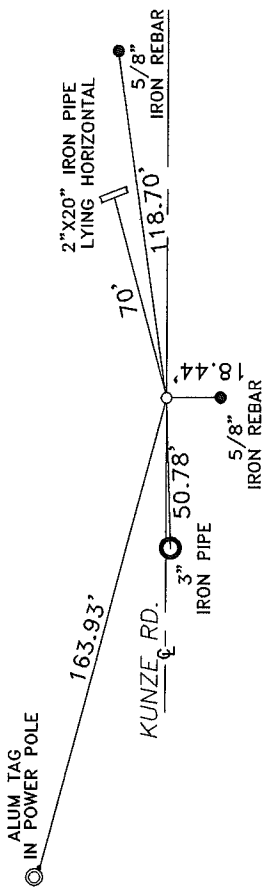
MONUMENTS AND ACCESSORIES FOUND: CONDITION AND SOURCE

- 3" BRASS CAP STAMPED AS BELOW USED AS CORNER.
- 3" IRON PIPE S 88°13'07" W 50.78 FEET.
- 2"X20" IRON PIPE LYING HORIZONTALLY N 75° E 70 FEET ±.
- 5/8" IRON REBAR WITH ALUM. CAP N 81°47'07" E 118.70 FEET.

MONUMENT DETAIL



SKETCH



MONUMENT SET (PROCEDURES AND DESCRIPTION)

NEW ACCESSORIES FROM WHICH

A 5/8"X30" IRON REBAR WITH PLASTIC CAP #951 BEARS S 0°23'32" E 18.44'
 AN ALUM. TAG #951 IN A POWER POLE BEARS N 74° 59'43" W 163.93'

LOCATION AND COMMENTS

FROM INTERSECTION OF
 TOM'S CAMP RD. WITH
 KUNZE RD. GO WEST 1.0
 MILE TO CORNER AT A
 FENCE CORNER.

COMPASS DEC.

FIRM/AGENCY
 EDWARDS SURVEYING
 P.O. BOX 763
 HERMISTON, OREGON 97838

PARTY CHIEF
 G. DENNIS EDWARDS

NOTES

WITNESS
 JUD COPPOCK

SURVEYOR'S SEAL

REGISTERED
 PROFESSIONAL
 LAND SURVEYOR

OREGON
 JULY 16, 1971
 G. DENNIS EDWARDS
 9 5 1

RENEWS 12/31/2005