

OREGON CORNER RESTORATION FORM

SECTION 4

TOWNSHIP 3 NORTH

RANGE 27 EAST

COUNTY: MORROW

DATE: 03/01/2016

CORNER DESIGNATION: C-11

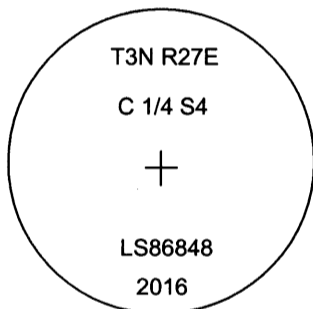
PREVIOUS RENEWALS / SURVEYS, etc.

THIS CORNER WAS NOT SET BY THE GLO.
IN THE EARLY 1970'S ROGERS SURVEYING INC. SURVEYED THIS CORNER AS PART OF
WORK FOR DEVELOPMENT OF SABRE FARMS (SEE SURVEY 2016-1759C).

MONUMENT and ACCESSORIES FOUND: (CONDITION AND SOURCE)

NO EVIDENCE WAS FOUND OF THE MONUMENT.

DIAGRAM:



MONUMENT and ACCESSORIES SET (PROCEDURES and DESCRIPTION)

SET A 2-1/2" BRASS CAP ON A 1" I.D. 30" LONG FLARED PIPE. MARKED AS SHOWN, AT POSITION PER 1973 SURVEY BY ROGERS SURVEYING FOR SABRE FARMS (2016-1759C), AS DETERMINED BY GRANT BOUNDARY METHOD AGAINST CORNERS SOUTH & WEST, AND FURTHER CONFIRM THIS POSITION FALLS ON THE BEARING-BEARING INTERSECTION OF LINES BETWEEN 1/4 CORNERS WITH TIES TO CORNERS NORTH & EAST.

REFERENCES SET:

From a power pole the corner bears S357°E 1.5'
From a power pole the corner bears N2°04'E 37.6'
From a 6" X 6" fence post the corner bears N43°W 49.3'
From a tee post the corner bears S45°W 1.5'
(Bearings are Grid)

LOCATION and COMMENTS

NAD83 / 2011 Oregon North coordinates (International Feet)
N 768625.41
E 8471263.24

RECEIVED BY:

MORROW COUNTY SURVEYOR

DATE 5-17-2016

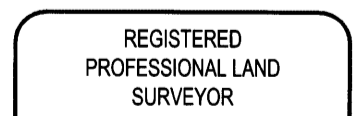
REC'D BY: S.K.H.

NO. 3427C11

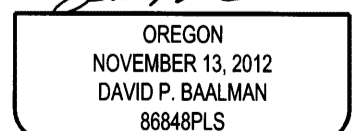
FIRM / AGENCY

ROGERS SURVEYING, Inc., P.S.
1455 COLUMBIA PARK TRAIL, #201
RICHLAND, WA 99352
(509) 783-4141

SURVEYORS SEAL



5-12-16



RENEWS: 12/31/2017