

OREGON LAND CORNER RECORD

T 3N, R 24E, W.M. Morrow County Corner Code No. J-19
 Segregated Surveys: 11
 Name: N/A Corner No.: 11
 D/C, H/S, Tract, Mining Claim, Indian Allotment, Federal Reserve, Townsite.
14

1. History of Corner Establishment and Subsequent Restoration:

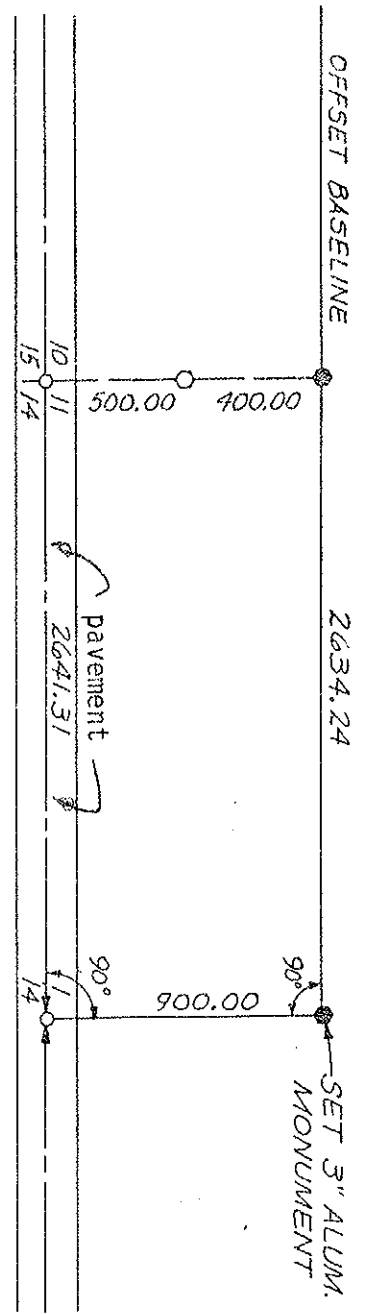
Set 3" aluminum cap monument 30" long, 26" in the ground stamped "Ref. Mon. 11
 T3N, R24E 900.00 South 1986".
 Monuments are "Berntsen" Model No. A-1-SB, split base, BLM approved for cadastral use.

Witness corners required due to major paving/grading project for Boeing Company Radar Range Testing Facility. Restorations of corners at original positions not practical due to facility operations and security.

2. Description of Evidence Found:

Found general land office brass cap on 1 inch pipe firmly set 6 inches above the ground. Dated 1939 corner destroyed during construction of radar test range.

3. Describe Monument, Accessories and Corollary Data to Perpetuate this Corner Location.
 Diagram corner and indicate meridian and reference to map of record. Surveyor's Field Book No. 1 Page No. 23 Date of Work 9-24-86 Job No. 5553.2



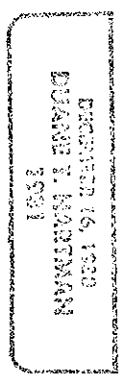
Location & Comments	Compass Declination	N/A
Access to the new witness monuments will require	Firm/Agency	Horton Dennis & Associates, Inc.
clearance from Boeing	Address:	320 Second Avenue South
Facilities Manager at	Kirkland, WA	98033-6687
Boardman Office or call	Party Chief:	Harry West
(206) 773-5550, Boeing Co., Seattle, WA		

SURVEYOR'S CERTIFICATE (SEAL)

This corner record correctly represents work performed by me or under my direction.

Date January 20, 1987
 Signature Duane T. Hartman #1931
 Certificate No. _____

Surveyor's ADDITIONAL CERTIFICATE



Filed for record this 30 day of January 1987 at at the at M.
 In Book 852 K of _____ at page _____ at the _____ M.
 request of Duane T. Hartman

David H. Van
 County Auditor
 Surveyor