

OREGON LAND CORNER RECORD

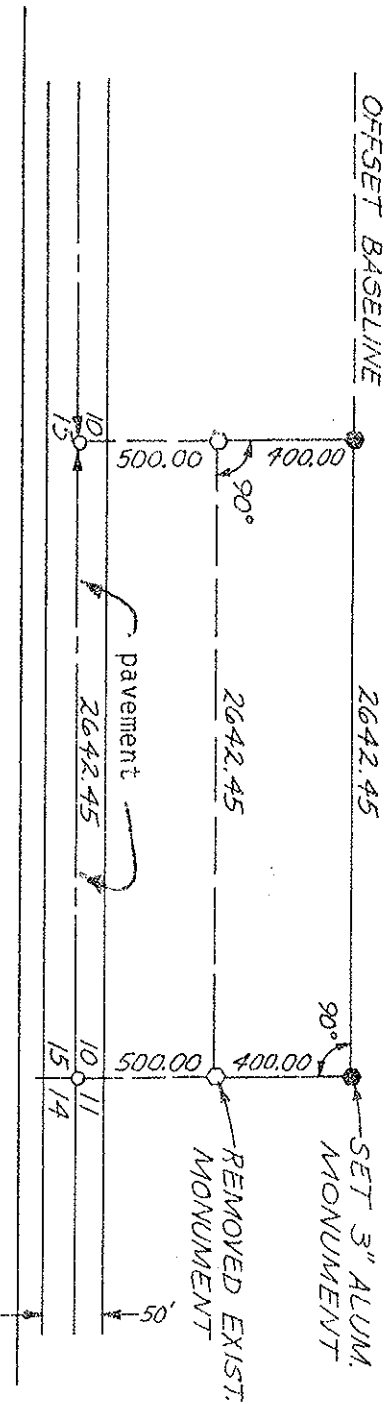
T 3N, R 24E, W.M. Morrow County J-17 Corner Code No. 10 | 11
 Segregated Surveys: N/A Corner No.: 15 | 14
 Name: DLO, HES, Tract, Mining Claim, Indian Allotment, Federal Reserve, Townsite.

1. History of Corner Establishment and Subsequent Restoration:
 Set 3" aluminum monument 30 inches long, set 26" in the ground stamped "Ref Mon 10 | 11 T3N, R24E, 900.00 South 1986"
15 | 14
 Monuments are "Berntsen" Model No. A-1 SB, Split base, BLM approved for cadastral use. Witness corners required due to major paving/grading project for Boeing Company Radar Range Testing Facility. Restoration of corners at original positions not practical due to facility operations and security.

2. Description of Evidence Found:
 Found 3" aluminum witness corner stamped:

"Ref. Mon. 10 | 11 T3N, R24E, 500.00 South 1986"
15 | 14

3. Describe Monument, Accessories and Corollary Data to Perpetuate this Corner Location.
 Diagram corner and indicate meridian and reference to map of record. Surveyor's Field Book No. 1 Page No. 23 Date of Work 9-24-86 Job No. 5553.2



Location & Comments
 Access to the new witness monuments will require _____
 Clearance from Boeing _____
 Facilities Manager at _____
 Boardman Office or call _____
 (206) 773-5650, Boeing _____
 Co., Seattle, WA _____

Compass Declination N/A
 Firm/Agency Horton Dennis & Associates, Inc.
 Address: 320 Second Avenue South Kirkland, WA 98033-6687
 Party Chief: Harry West

SURVEYOR'S CERTIFICATE

(SEAL)

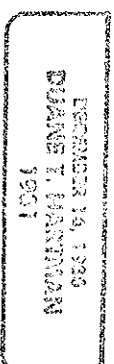
This corner record correctly represents work performed by me or under my direction.

Date. January 20, 1987

Signature Duane T. Hartman # 1931
 Certificate No.

AUDITOR'S CERTIFICATE

Filed for record this 30 day of January 1987 at _____
 In Book 052K of _____ at page _____
 at the request of Duane T. Hartman



Duane T. Hartman
 County Auditor
 Surveyor