

OREGON CORNER RESTORATION FORM

Section 34 Township 2S Range 29E
 County Morrow Date: 01/15/20
 Corner Designation: 2S29Z13

Section corner common to S33 & S34 T2S29E, S3 & S4 T3S29EWM

_____ Condition Report Only
 _____ Not Found
 _____ X _____ Remonumented
 _____ Unrecorded
 _____ Surveyed In
 _____ Referenced Out

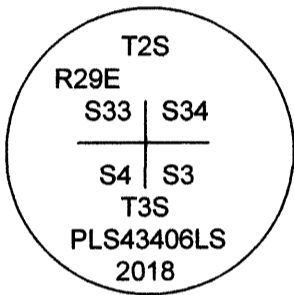
Previous Renewals / Surveys, etc.

Originally established by George Pershin in 1871. He set a stone 20X12X8, on a West hillside for the corner.

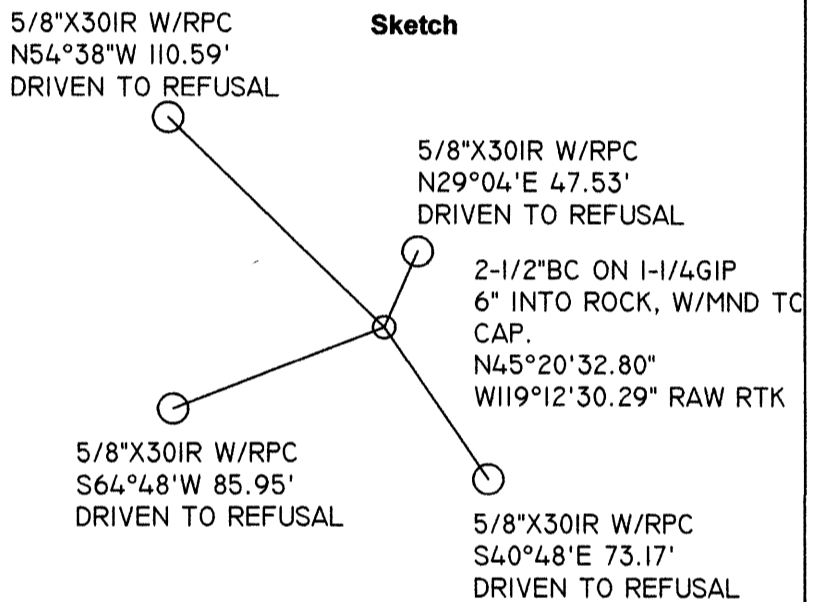
Monuments and Accessories Found: (Condition and Source)

A 21"X17 "X7 " stone with clearly visible chiseled notches on top of the stone. The stone appeared to have tipped over and slid downhill, a few feet, from a small mound of stones.

Diagram



Sketch



RAW NONADJUSTED NAD 83/91
 OREGON STATE PLANE NORTH
 INTERNATIONAL FEET

LAT - 45° 20' 32.80" N
 LON - 119° 12' 30.29" W RAW RTK GPS DATA

Monument (s) Set (Procedures and Description)

I set a 2.5" brass cap on a 1-1/4" X 30" flared, galvanized iron pipe 6" into the ground, with the original corner stone buried along the west side at the base of the monument, with a mound of stones built to the cap. The cap is marked as shown in the diagram above.

References Set: RED PLASTIC CAPS MARKED ORPLS43406LS/WAPLS44338

- A 5/8"X30" IR W/RPC BRS. N54°38"W 110.59'.
 - A 5/8"X30" IR W/RPC BRS N29°04'E 47.53'.
 - A 5/8"X30" IR W/RPC BRS S40°48'E 73.17'.
 - A 5/8"X30" IR W/RPC BRS S64°48"W 85.95'.
- ALL REBAR DRIVEN TO REFUSAL, WHICH IS APPROXIMATELY 12" INTO GROUND.

Location and Comments

The corner falls on a very rocky, steep Westerly slope overlooking Big Buttercreek. The owner's warned to be aware of snakes. Work was completed on this project at the end of 2019.

Compass Declination
 14.25° E

Surveyors Seal

REGISTERED
 PROFESSIONAL
 LAND SURVEYOR

Robert D. English
 OREGON
 JANUARY 11, 2005
 ROBERT DOUGLAS ENGLISH
 43406LS

RENEWAL DATE: 12/31/21

RECEIVED BY:

Date: 3-30-2020
 Rec'd By: S. K. H.
 No. 2529213

Firm / Agency

Survey One, LLC.
 P.O. Box 382
 Pendleton, OR 97801
 (541) 276-2055