

OREGON CORNER RESTORATION FORM

Section 34 Township 2S Range 29E
 County Morrow Date: 01/15/20

Corner Designation: 2S29V13

Section Corner common to S28,S27,S33,S34 T2S29EWM

- _____ Condition Report Only
- _____ Not Found
- X Remonumented
- _____ Unrecorded
- _____ Surveyed In
- _____ Referenced Out

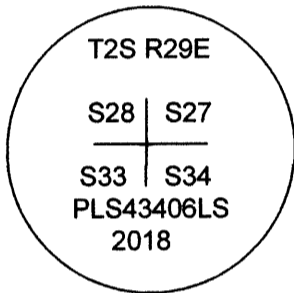
Previous Renewals / Surveys, etc.

Originally established by George Pershin in 1871. He set a stone 24X14X10, on a rocky point for corner to Sections 27, 28, 33, and 34.

Monuments and Accessories Found: (Condition and Source)

A 26"X14 "X10 " stone with 3 notches clearly visible chiseled near the North top face of the stone. The stone was found standing in a rock mound on the top of a rock outcrop, on the West side of Big Buttercreek, just North of a drainage that runs towards the Northwest.

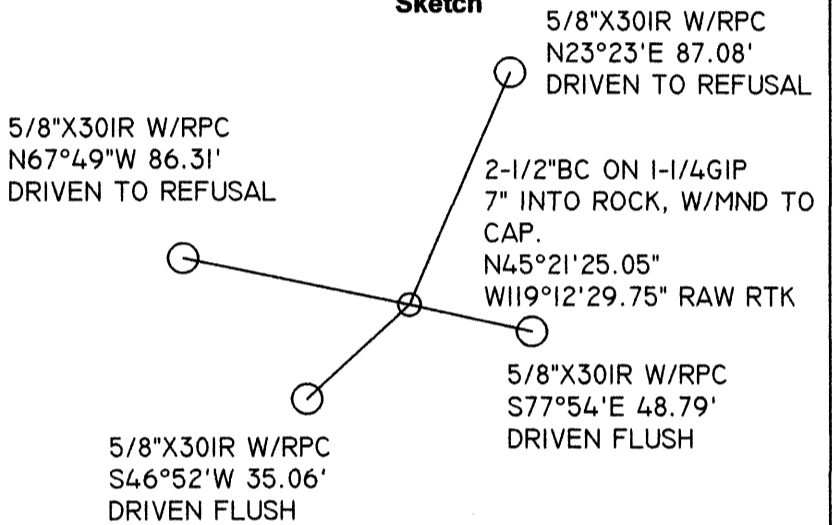
Diagram



RAW NONADJUSTED NAD 83/91
 OREGON STATE PLANE NORTH
 INTERNATIONAL FEET

LAT - 45° 21' 25.05" N
 LON - 119° 12' 29.75" W RAW RTK GPS DATA

Sketch



Monument (s) Set (Procedures and Description)

I set a 2.5" brass cap on a 1-1/4" X 30" flared, galvanized iron pipe 7" into the ground, with the original corner stone buried along the west side at the base of the monument, with a mound of stones built to the cap. The cap is marked as shown in the diagram above.

- References Set:** RED PLASTIC CAPS MARKED ORPLS43406LS/WAPLS44338
- A 5/8"X30" IR W/RPC BRS. N67°49"W 86.31'. DRIVEN TO REFUSAL. APPROX. 12".
 - A 5/8"X30" IR W/RPC BRS N23°23'E 87.08'. DRIVEN TO REFUSAL. APPROX. 12".
 - A 5/8"X30" IR W/RPC BRS S77°54'E 48.79'. DRIVEN FLUSH WITH THE GROUND.
 - A 5/8"X30" IR W/RPC BRS S46°52"W 35.06'. DRIVEN FLUSH WITH THE GROUND.

Location and Comments

The corner falls on the South edge of the top of a rock outcrop, West of Big Butter Creek, approximately 250' from the toe of the Southerly slope. I was not able to complete this project until the end of December 2019.

RECEIVED BY:

Date: 3-30-2020
 Rec'd By: S.K.H.
 No. 2529V13

Compass Declination

14.25° E

Firm / Agency

Survey One, LLC.
 P.O. Box 382
 Pendleton, OR 97801
 (541) 276-2055

Surveyors Seal

REGISTERED
 PROFESSIONAL
 LAND SURVEYOR

Robert D. English

OREGON
 JANUARY 11, 2005
 ROBERT DOUGLAS ENGLISH
 43406LS

RENEWAL DATE: 12/31/21