

**OREGON CORNER RESTORATION FORM**

Section 14 Township 2S Range 29E  
County MORROW Date: 12/08/21

Corner Designation: 2S29N21

Section Corner common to T2S29E13, S14, S23 & S24

- \_\_\_\_\_ Condition Report Only
- \_\_\_\_\_ Not Found
- \_\_\_\_\_ Remonumented
- \_\_\_\_\_ Unrecorded
- \_\_\_\_\_ Surveyed In
- X   Referenced Out

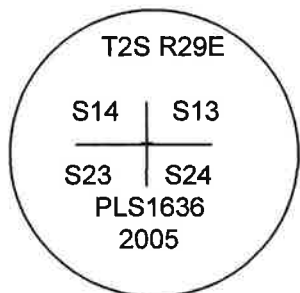
**Previous Renewals / Surveys, etc.**

Originally Surveyed by Pershin on September 12, 1871, under GLO contract No. 154 as follows:  
Set a 20X9X6 Stone for the corner.

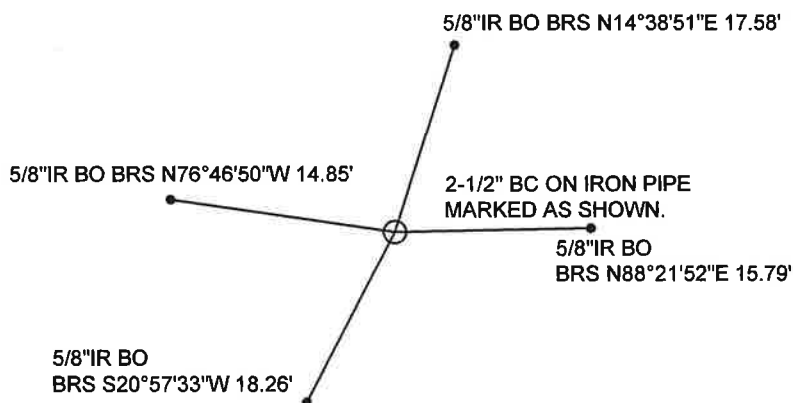
**Monuments and Accessories Found: (Condition and Source)**

FOUND A STONE OF SAME DIMENSIONS, IN A LARGE MOUND OF STONES ON A SOUTHEAST HILLSIDE. FOUND A 2-1/2" BRASS CAP BURIED UNDER THE MOUND. GAYLORD, 2005. NO LAND CORNER RECORD FOUND.

Diagram



Sketch (NTS)



NAD 83/91  
OREGON STATE PLANE NORTH  
INTERNATIONAL FEET (GRID VALUES)

N629547.11 E8544652.60  
LAT - 45° 23' 08.59" N  
LON - 119° 09' 59.83" W

NOTE: ALL BEARINGS AND DISTANCES ARE NAD83 ORNSPC GRID VALUES BASED ON RTK GPS OBSERVATIONS.

**Monument (s) Set (Procedures and Description)**

NONE.

**References Set:** 1-1/4" RED PLASTIC CAPS MARKED "ORPLS43406LS/WAPLS44338"

- A 5/8"X30" REBAR WITH RED PLASTIC CAP BEARS N14°38'51"E, 17.58'. PROTRUDING 7".
  - A 5/8"X30" REBAR WITH RED PLASTIC CAP BEARS N88°21'52"E, 15.79'. PROTRUDING 6".
  - A 5/8"X30" REBAR WITH RED PLASTIC CAP BEARS S20°57'33"W, 18.26'. PROTRUDING 16".
  - A 5/8"X30" REBAR WITH RED PLASTIC CAP BEARS N76°46'50"W, 14.85'. PROTRUDING 12".
- BEARING OBJECT SIGNS WERE ATTACHED TO THE IRON REBAR.  
SET STEEL FENCE POST 2.8' NORTH OF CORNER MONUMENT, WITH WITNESS SIGN.

**Location and Comments**

APPROX. 140' WEST OF HWY 74  
ON WEST SLOPE INTO CANYON.

**Compass Declination**

14° E

**Surveyors Seal**

REGISTERED  
PROFESSIONAL  
LAND SURVEYOR

*Robert D. English*  
OREGON  
JANUARY 11, 2005  
ROBERT DOUGLAS ENGLISH  
43406LS

**RECEIVED BY:**

Date: 12-23-21  
Rec'd By: MAK  
No. 2S29N21

**Firm / Agency**

Survey One, LLC.  
P.O. Box 382  
Pendleton, OR 97801  
(541) 276-2055

RENEWAL DATE: 12/31/23