

OREGON CORNER RESTORATION FORM

Section 14 Township 2S
County MORROW Date: 12/08/21

Range 29E

Corner Designation: 2S29N19

Section Corner common to T2S29E 1/4 S14, S23

- _____ Condition Report Only
- _____ Not Found
- _____ X _____ Remonumented
- _____ Unrecorded
- _____ Surveyed In
- _____ Referenced Out

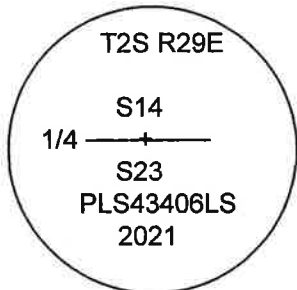
Previous Renewals / Surveys, etc.

Originally Surveyed by Pershin on September 14, 1871, under GLO contract No. 154 as follows:
Set a 18X12X5 Stone for the corner.

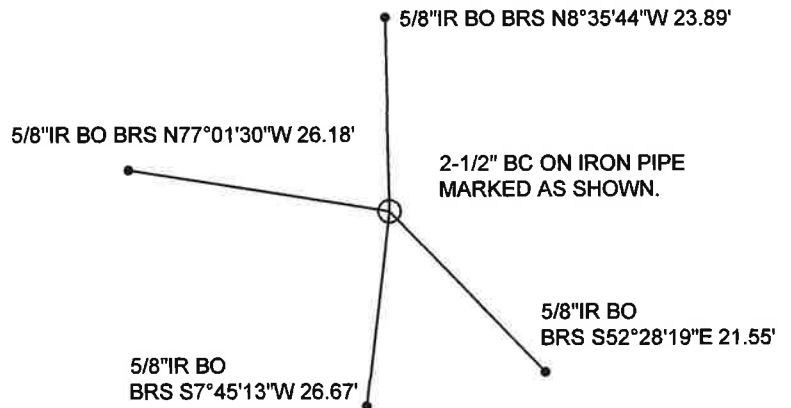
Monuments and Accessories Found: (Condition and Source)

FOUND 2 STONES OF SAME DIMENSIONS, IN A LARGE MOUND OF STONES ON A WEST HILLSIDE. VERY OBVIOUS MOUND, AND ONLY ONE FOUND IN THE IMMEDIATE SEARCH AREA. (300') CORNER APPEARS TO HAVE BEEN ACTUALLY SET ON THE WAY EAST, BY IT'S LOCATION. CALCULATED POSITION PUTS IT NEAR THE BOTTOM OF A DRAINAGE, ON A VERY ROCKY HILLSIDE. NO FENCES IN THIS AREA.

Diagram



Sketch (NTS)



NAD 83/91
OREGON STATE PLANE NORTH
INTERNATIONAL FEET (GRID VALUES)

N629440.32 E8541874.18
LAT - 45° 23' 07.99" N
LON - 119° 10' 38.78" W

NOTE: ALL BEARINGS AND DISTANCES ARE NAD83 ORNSPC GRID VALUES BASED ON RTK GPS OBSERVATIONS.

Monument (s) Set (Procedures and Description)

SET A 2-1/2" BRASS CAP ON A 1-1/4"X30" GALVANIZED IRON PIPE, 25" IN THE GROUND WITH MOUND OF STONE TO THE CAP. BURIED THE TWO STONES OF CALLED SIZE ALONGSIDE. MARKED AS SHOWN.

References Set: 1-1/4" RED PLASTIC CAPS MARKED "ORPLS43406LS/WAPLS44338"

- A 5/8"X30" REBAR WITH RED PLASTIC CAP BEARS N8°35'44"W, 22.89'.
 - A 5/8"X30" REBAR WITH RED PLASTIC CAP BEARS S52°28'19"E, 21.55'.
 - A 5/8"X30" REBAR WITH RED PLASTIC CAP BEARS S7°45'13"W, 26.67'.
 - A 5/8"X30" REBAR WITH RED PLASTIC CAP BEARS N77°01'30"W, 26.18'.
- BEARING OBJECT SIGNS WERE ATTACHED TO THE IRON REBAR.
SET STEEL FENCE POST 1.0' NORTHWEST OF CORNER MONUMENT, WITH WITNESS SIGN.

Location and Comments

APPROX. 80' WEST OF BOTTOM OF DRAINAGE. APPROX. 90' EAST OF OLD JEEP ROAD. ON WEST HILLSIDE.

Compass Declination

14° E

Surveyors Seal

REGISTERED
PROFESSIONAL
LAND SURVEYOR

Robert Douglas English
OREGON
JANUARY 11, 2005
ROBERT DOUGLAS ENGLISH
43406LS

RECEIVED BY:

Date: 12-23-21
Rec'd By: MPK
No. 2S29 N19

Firm / Agency

Survey One, LLC.
P.O. Box 382
Pendleton, OR 97801
(541) 276-2055

RENEWAL DATE: 12/31/23