

**OREGON CORNER RESTORATION FORM**

Section 14 Township 2S  
County MORROW Date: 12/08/21

Range 29E

Corner Designation: 2S29L21

1/4 Section Corner common to T2S29E S13 & S14

- Condition Report Only
- Not Found
- Remonumented
- Unrecorded
- Surveyed In
- Referenced Out

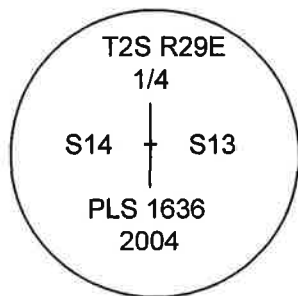
**Previous Renewals / Surveys, etc.**

Originally Surveyed by Pershin on September 14, 1871, under GLO contract No. 154 as follows:  
Set a 22X6X5 Stone for the corner.

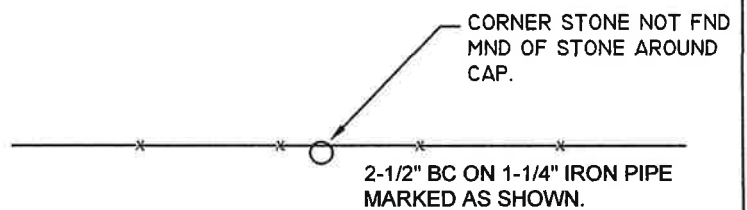
**Monuments and Accessories Found: (Condition and Source)**

FOUND A 2-1/2" BRASS CAP IN A MOUND OF STONE, BY DENNIS GAYLORD, ALTHOUGH I COULD NOT FIND ANY LAND CORNER RECORDS FOR THIS CORNER.

Diagram



Sketch (NTS)



NOTE: ALL BEARINGS AND DISTANCES ARE NAD83 ORNSPC GRID VALUES BASED ON RTK GPS OBSERVATIONS.

NAD 83/91  
OREGON STATE PLANE NORTH  
INTERNATIONAL FEET (GRID VALUES)

N632207.64 E8544613.74

LAT - 45° 23' 34.86" N LON - 119° 09' 59.76" W

**Monument (s) Set (Procedures and Description)**

NONE.

**References Set:**

THIS CORNER WAS NOT MAINTAINED AS PART OF THIS PROJECT. INFORMATIONAL ONLY.

**Location and Comments**

IN EAST-WEST FENCE LINE.  
EAST OF HWY 74.

**Compass Declination**

14° E

**Surveyors Seal**

REGISTERED  
PROFESSIONAL  
LAND SURVEYOR

*Robert D. English*  
 OREGON  
 JANUARY II, 2005  
 ROBERT DOUGLAS ENGLISH  
 43406LS

RENEWAL DATE: 12/31/23

**RECEIVED BY:**

Date: 12-23-21  
 Rec'd By: MPK  
 No. 2S29L21

**Firm / Agency**

Survey One, LLC.  
 P.O. Box 382  
 Pendleton, OR 97801  
 (541) 276-2055