

OREGON CORNER RESTORATION FORM

Section 14 Township 2S
 County MORROW Date: 12/08/21

Range 29E

Corner Designation: 2S29J17

Section corner common to T2S29ES10, S11, S14, S15

- _____ Condition Report Only
- _____ Not Found
- _____ X Remonumented
- _____ Unrecorded
- _____ Surveyed In
- _____ Referenced Out

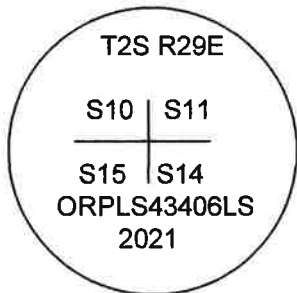
Previous Renewals / Surveys, etc.

Originally Surveyed by Pershin on September 14, 1871, under GLO contract No. 154 as follows:
 Set a 28X9X5 Stone for the corner.

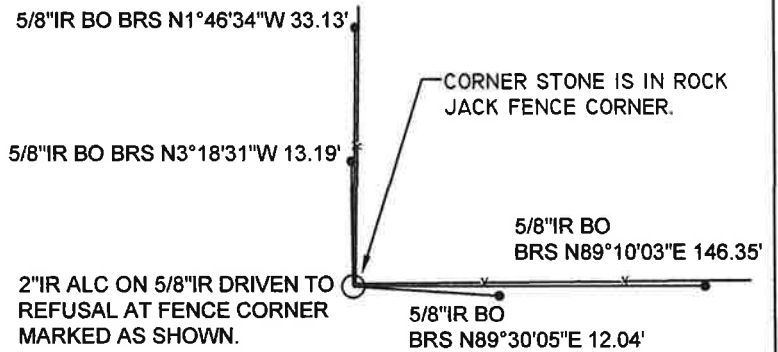
Monuments and Accessories Found: (Condition and Source)

Found a 28X9X5 stone in a rock jack at a fence corner running North and East. Calculated position is within 5' of this position from the section corner to the south.

Diagram



Sketch (NTS)



NOTE: ALL BEARINGS AND DISTANCES ARE NAD83 ORNSPC GRID VALUES BASED ON RTK GPS OBSERVATIONS.

NAD 83/91
 OREGON STATE PLANE NORTH
 INTERNATIONAL FEET (GRID VALUES)

N634745.86 E8539191.64

LAT - 45° 24' 00.80" N LON - 119° 11' 15.15" W

Monument (s) Set (Procedures and Description)

SET 2" ALUMINUM CAP ON 5/8"X30" REBAR DRIVEN TO REFUSAL AND THEN CUT OFF 5" ABOVE THE GROUND AND SURROUNDED WITH A SMALL MOUND OF STONES AT THE BASE OF A ROCK JACK FENCE CORNER.

References Set: 1-1/4" RED PLASTIC CAPS MARKED "ORPLS43406LS/WAPLS44338"

- A 5/8"X30" REBAR WITH RED PLASTIC CAP BEARS N1°46'34"W, 33.13'.
 - A 5/8"X30" REBAR WITH RED PLASTIC CAP BEARS N3°18'31"W, 13.19'.
 - A 5/8"X30" REBAR WITH RED PLASTIC CAP BEARS N89°30'05"E, 12.04'.
 - A 5/8"X30" REBAR WITH RED PLASTIC CAP BEARS N89°10'03"W, 146.35'.
- BEARING OBJECT SIGNS WERE ATTACHED TO THE FENCE POSTS, NEAR THE IRON REBAR.
 ATTACHED WITNESS SIGN TO ROCK JACK.

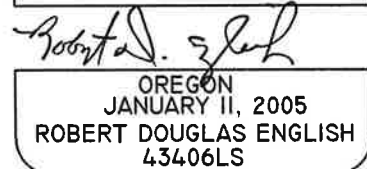
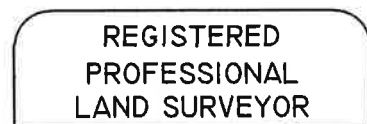
Location and Comments

From gravel driveway and gate on Hwy 74
 Corner is approx. 3/4 mile N. Fence corner
 is visible from driveway as you drive North.

Compass Declination

14° E

Surveyors Seal



RENEWAL DATE: 12/31/23

RECEIVED BY:

Date: 12-23-21
 Rec'd By: MPK
 No. 2S29J17

Firm / Agency

Survey One, LLC.
 P.O. Box 382
 Pendleton, OR 97801
 (541) 276-2055