

# OREGON CORNER RESTORATION FORM

## CORNER DESIGNATION: T2S, R28E, R-9

SOUTHWEST CORNER OF SECTION 21, TOWNSHIP 2 SOUTH, RANGE 28 EAST, W.M., MORROW COUNTY, OREGON.

## PREVIOUS RENEWALS / SURVEYS, ETC.:

T2S R28E WAS ORIGINALLY SUBDIVIDED BY U.S. DEPUTY SURVEYORS GEORGE WILLIAMS AND GEORGE S. PERSHIN UNDER CONTRACT NO. 154 DATED JUNE 6, 1871. THE NOTES READ, "SET A STONE 22X8X4 ON W. SIDE OF HILL FOR CORNER TO SEC. 20, 21, 28 AND 29".

## MONUMENT AND ACCESSORIES FOUND:

FOUND RECORD STONE PLAINLY MARKED WITH 4 NOTCHES ON NORTHEAST CORNER. STONE PLANTED VERTICALLY WITH APPROXIMATELY 8" EXPOSED ABOVE SURFACE. STONE IS IN UNDISTURBED AND IN VERY GOOD CONDITION.

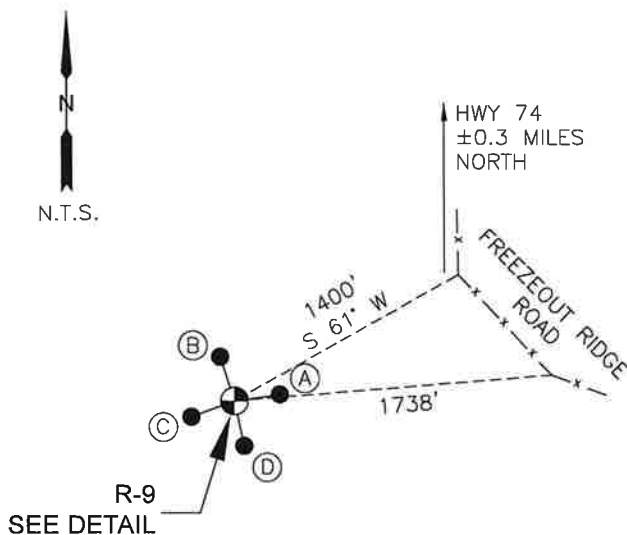
## MONUMENT AND ACCESSORIES SET:

AT LOCATION OF FOUND STONE, SET 2-3/8" BRASS CAP ON 2-3/8" O.D. X 30" GALVANIZED IRON PIPE, WITH CAP ± 4" ABOVE GRADE, MARKED AS SHOWN IN DETAIL BELOW. ESTABLISHED 4 REFERENCE MONUMENTS AS FURTHER DESCRIBED AND DETAILED BELOW. BURIED STONE AT WEST SIDE OF CAP, STILL SLIGHTLY EXPOSED.

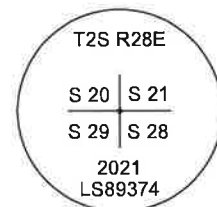
## REFERENCES:

- (A) SET 5/8" X 30" STEEL REBAR WITH PINK PLASTIC CAP. CORNER BEARS S 82° W. 10.00'.
- (B) SET 5/8" X 30" STEEL REBAR WITH PINK PLASTIC CAP. CORNER BEARS S 18° E. 10.00'.
- (C) SET 5/8" X 30" STEEL REBAR WITH PINK PLASTIC CAP. CORNER BEARS N 70° E. 10.00'.
- (D) SET 5/8" X 30" STEEL REBAR WITH PINK PLASTIC CAP. CORNER BEARS N 12° W. 10.00'.

## DIAGRAM:



## R-9 DETAIL:



## LOCATION AND COMMENTS:

CORNER IS APPROXIMATELY 1400' SOUTHWESTERLY OF THE FIRST FENCE LINE ANGLE POINT IN FREEZEOUT RIDGE ROAD, ±0.3 MILES SOUTH OF HWY 74.

REGISTERED  
PROFESSIONAL  
LAND SURVEYOR

*Matthew Patrick Kenny*

OREGON  
JAN 12, 2016  
MATTHEW PATRICK KENNY  
89374PLS

RENEWALS: 6-30-21

## FIRM/AGENCY:

KENNY LAND SURVEYING  
P.O. BOX 447 HEPPNER,  
OR 97836

PARTY CHIEF: MATT KENNY

## BEARING BASE:

REPORTED BEARINGS ARE  
HAND HELD COMPASS BEARINGS  
TAKEN TO THE NEAREST DEGREE  
DECLINATION = 15° E

6-7-21

BY: MPK

NO: 2528 R9

SURVEY NO: 2021-1944C