

OREGON CORNER RESTORATION FORM

Section 35 Township 2S Range 26E
 County Morrow Date: September 7, 2017

Corner Designation: 2S26X21

Condition Report Only
 Not found
 Remonumented
 Unrecorded
 Surveyed in
 Referenced out

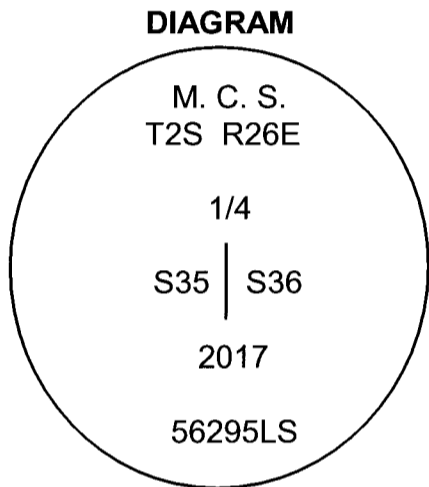
1/4 corner common to sections 35 and 36 T2S, R26E,
 W.M., Morrow County, Oregon.

Previous Renewals / Surveys, etc.

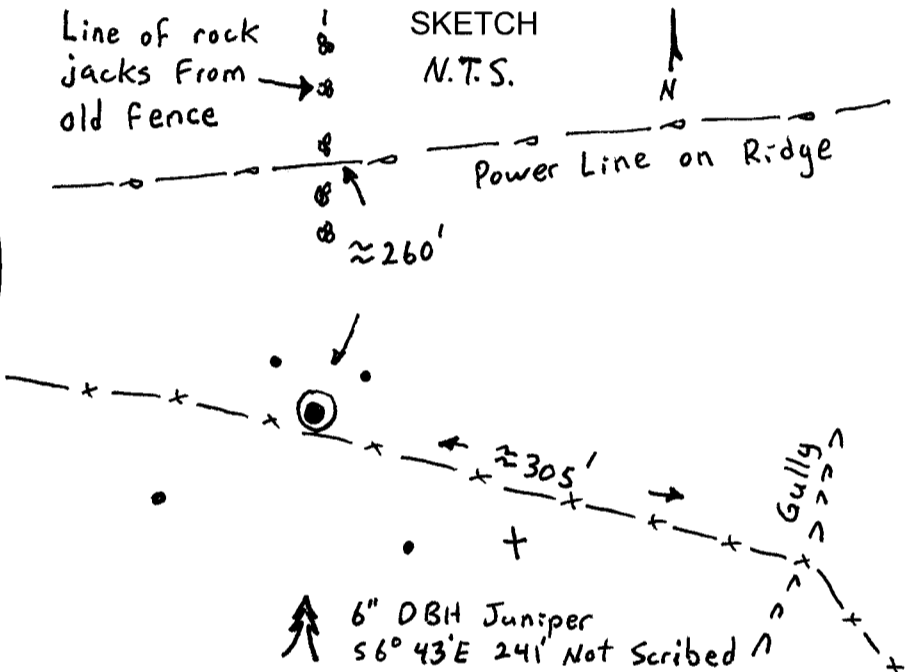
Corner was originally set by B.J. Pengra under contract No. 119 Dated February 16, 1867. His record reads: Set a stone 18x10x6 inches as 1/4 section corner. In 1984 Gary Langlitz under his survey for the Army Corps of Engineers Willow Creek Lake project reported coordinates for this corner but gave no information as to what the monument was.

Monument and Accessories found: (condition and source)

I found the original stone 16"x10"x6" set by B.J. Pengra in a small mound of small stones at the intersection of old fence remains with fences running east, west and north. The stone was clearly marked 1/4.



- ⊙ = Brass Cap
- = Rebar Reference
- + = USACE corner point



MONUMENT (S) AND ACCESSORIES SET (Procedures and Description)

At the position of the original stone I set a 1 1/2"x30" galvanized iron pipe with a 2 3/8" brass cap stamped as shown in the diagram above 29" in the ground. I buried the original stone along side and built a small mound of stone around the cap.

For references I set four 5/8" iron rebars with a 1.25" orange plastic cap stamped WTS and 56295LS attached as follows:

- a rebar 8" long bears N53°47'16"W, 27.76 feet, driven to refusal and flush with the surface;
 - a rebar 18" long bears N36°08'52"E, 21.70 feet, driven to refusal and flush with the surface;
 - a rebar 12" long bears S52°17'03"E, 45.59 feet, driven to refusal and flush with the surface;
 - a rebar 12" long bears S36°54'12"W, 57.42 feet, driven to refusal and flush with the surface;
- The unmonumented position by the Corps of Engineers bears S79°05'14"E, 64.79 feet;

Measurements were made with a Trimble RTK GPS system.

Location and comments
 Witnessed by:

Compass Declination

Surveyor's Seal

RECEIVED BY:
 Morrow County Surveyor
 Date: 9-21-2017
 Rec'd By: S.K.H.
 No. 2S26X21
 Survey No. 2017-1806D

Firm / Agency
 Morrow County Surveyor
 Address
 P.O. Box G
 Pilot Rock, Or. 97868

**REGISTERED
 PROFESSIONAL
 LAND SURVEYOR**

Stephen K. Haddock

OREGON
 JULY 9, 2001
STEPHEN K. HADDOCK
 56295LS

RENEWS: 6-30-19