

OREGON CORNER RESTORATION FORM

Section 34 Township 2S Range 26E
 County Morrow Date: August 4, 2017

Corner Designation: 2S26X17

Condition Report Only
 Not found
 Remonumented
 Unrecorded
 Surveyed in
 Referenced out

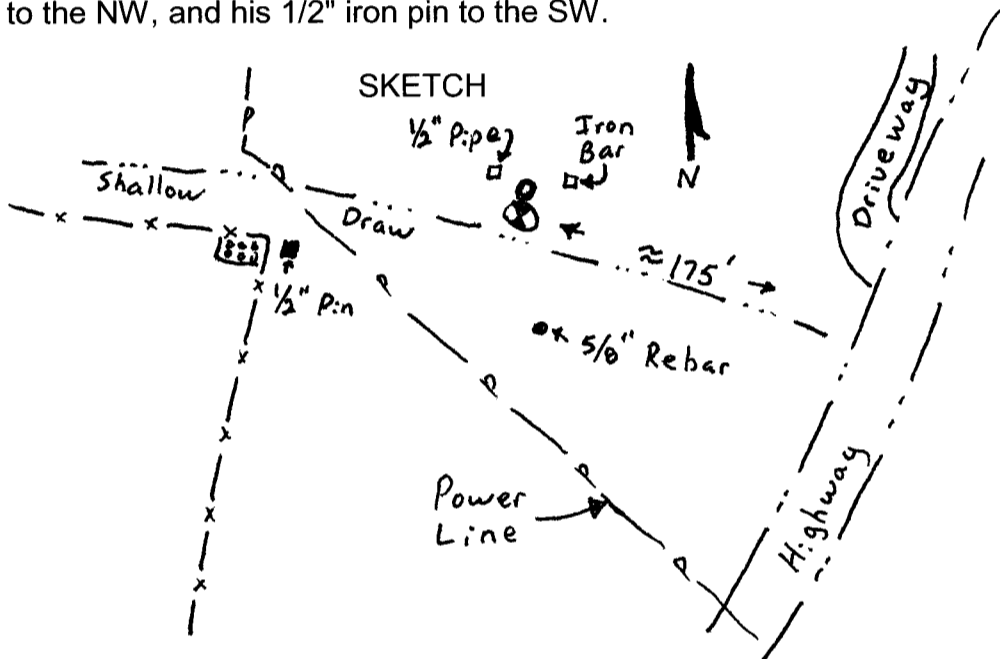
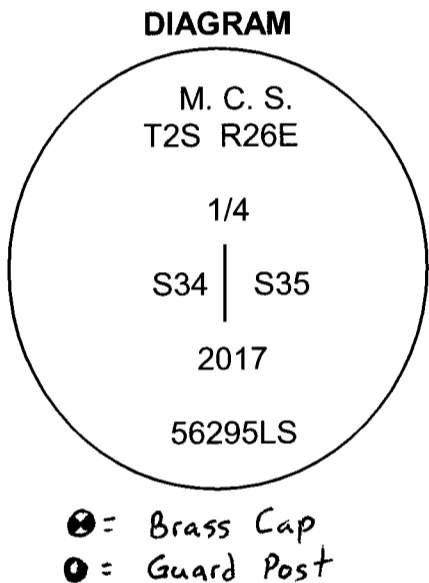
1/4 corner common to sections 34 and 35 T2S, R26E,
 W.M., Morrow County, Oregon.

Previous Renewals / Surveys, etc.

Corner was originally set by B.J. Pengra under contract No. 119 Dated February 16, 1867. His record reads: Set a stone 20x14x8 inches as 1/4 section corner. In 1912 D.V.S. Reid set a rock marked C.S. in a mound of rock by survey. (See folder 1122.) Mr. Reid also made four references as follows: NE 15 links, fine clear glass with piece of iron 4x2x3/8; NW 15 links, iron pipe 3/4x7 in deposit of fine stone coal; SW 39 links, round iron rod 1/2 in. x 18 in. also with fine stone coal; SE 25 links deposit broken earthen ware. In survey folders 1335, 1339, and 1510, Judson Coppock computed a point for this quarter corner that he never monumented.

Monument and Accessories found: (condition and source)

A basalt stone 18x14x9 inches in a mound of stones plainly marked 1/4. I found Reid's 1 1/4"x3/8" iron bar to the NE, his 1/2" iron pipe to the NW, and his 1/2" iron pin to the SW.



MONUMENT (S) AND ACCESSORIES SET (Procedures and Description)

At the exact corner point established by Reid I set a PK nail with a 2" brass washer in the bedrock 18 inches below the surface as a memorial. I set a 2 3/8" brass cap on a 1 1/2"x18" galvanized iron pipe flush with the surface in a mound of earth and stone 4' diameter base to top of the cap.

For references I set a 5/8"x24" iron rebar with a 1.25" orange plastic cap stamped WTS and 56295LS attached, S2°07'21"W, 34.85 feet;
 the 1/2" pin (SW reference) set by Reid bears S70°45'10"W, 38.64 feet;
 the 1/2" iron pipe (NW reference) set by Reid bears N33°03'05"W, 9.90 feet;
 the 3/8" iron bar (NE reference) set by Reid bears N57°53'15"E, 9.90 feet;
 the unmonumented calculated corner point by Coppock bears N24°37'52"E, 9.47 feet, +/-.

Measurements were made with a Trimble RTK GPS system.

Location and comments
 Witnessed by:

Compass Declination

Surveyor's Seal

RECEIVED BY:
Morrow County Surveyor
 Date: 9-21-2017
 Rec'd By: S.K.H.
 No. 2526x17
 Survey No. 2017-1806D

Firm / Agency
Morrow County Surveyor
 Address
 P.O. Box G
 Pilot Rock, Or. 97868

**REGISTERED
 PROFESSIONAL
 LAND SURVEYOR**

Stephen K. Haddock

OREGON
 JULY 9, 2001
 STEPHEN K. HADDOCK
 56295LS

RENEWS: 6-30-19