

OREGON CORNER RESTORATION FORM

Section 26 Township 2S Range 26E
 County Morrow Date: September 11, 2017

Corner Designation: 2S26T21

Condition Report Only
 Not found
 Remonumented
 Unrecorded
 Surveyed in
 Referenced out

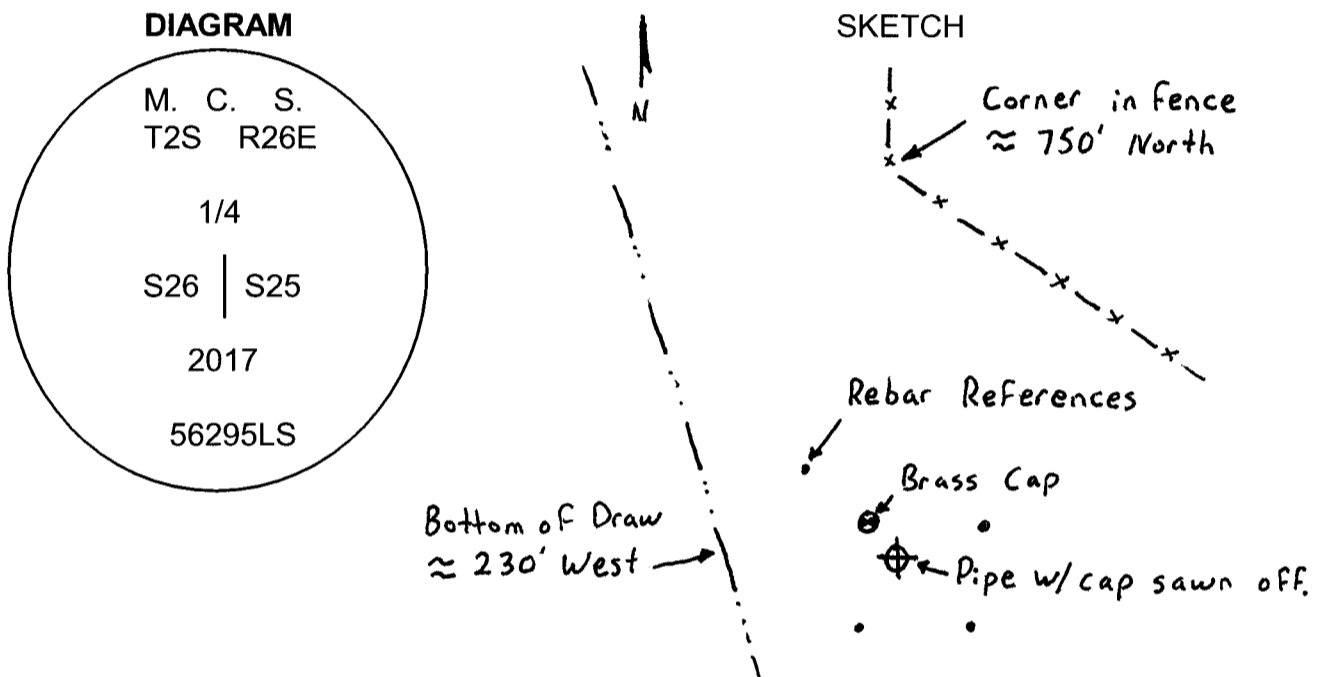
Common quarter corner to sections 25 and 26, T2S, R26E, W.M., Morrow County, Oregon.

Previous Renewals / Surveys, etc.

Corner originally set by B.J. Pengra under contract No. 119 dated February 15, 1867. His record reads: Set stone, 14 x 10 x 8 as 1/4 section corner. In 2008 (see survey folder 1526) I set a brass cap by proportionate measure.

Monument and Accessories found: (condition and source)

I found the monument I set in 2008. However, as that position was based on a proportioned point at the NE corner of the section, and the original corner point at the NE corner of the section has now been found, this monument is being modified to reflect the corrected position.



MONUMENT (S) AND ACCESSORIES SET (Procedures and Description)

At the corrected corner position I set a 1 1/2" x 18" galvanized iron pipe with a 2 1/4" brass cap stamped as shown in the diagram above 18" in the ground to bedrock. The cap is flush with the surface.

For references, I held the four 5/8" by 24" rebars with 1.25" orange plastic caps stamped WTS and 56295LS from 2008 as described below:
 the iron pipe from 2008 with the brass cap sawn off bears S32°56'19"E 4.26 feet;
 an iron rebar from 2008 bears N27°06'43"W, 30.35 feet;
 an iron rebar from 2008 bears S01°01'04"W, 89.68 feet;
 an iron rebar from 2008 bears S34°30'45"E, 88.98 feet;
 an iron rebar from 2008 bears S79°41'40"E, 89.80 feet;

The monument was set and references tied using a Trimble R7/R8 RTK GPS system.

Location and comments

Compass Declination

Surveyor's Seal

RECEIVED BY:
Morrow County Surveyor
 Date: 9-21-2017
 Rec'd By: S.K.H.
 No. 2S26T21
 Survey No. 2017-1806D

Firm / Agency
Witness Tree Surveying
 Address
P.O. Box G
Pilot Rock, OR 97868

REGISTERED PROFESSIONAL LAND SURVEYOR
Stephen K. Haddock
 OREGON
 JULY 9, 2001
 STEPHEN K. HADDOCK
 56295LS
 RENEWS: 6-30-19