

OREGON CORNER RESTORATION FORM

Section 26 Township 2S Range 26E
 County Morrow Date: August 11, 2017

Corner Designation: 2S26T17

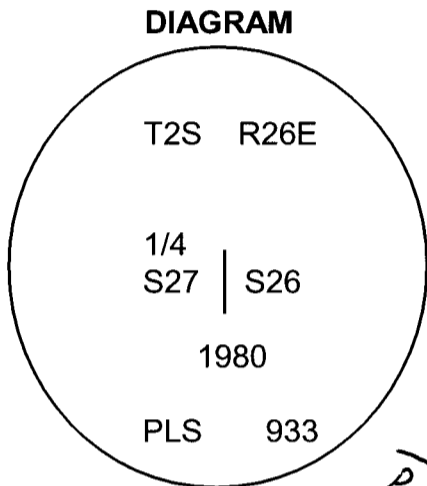
Condition Report Only
 Not found
 Remonumented
 Unrecorded
 Surveyed in
 Referenced out

Common quarter corner to sections 26 and 27, T2S, R26E,
 W.M., Morrow County, Oregon.

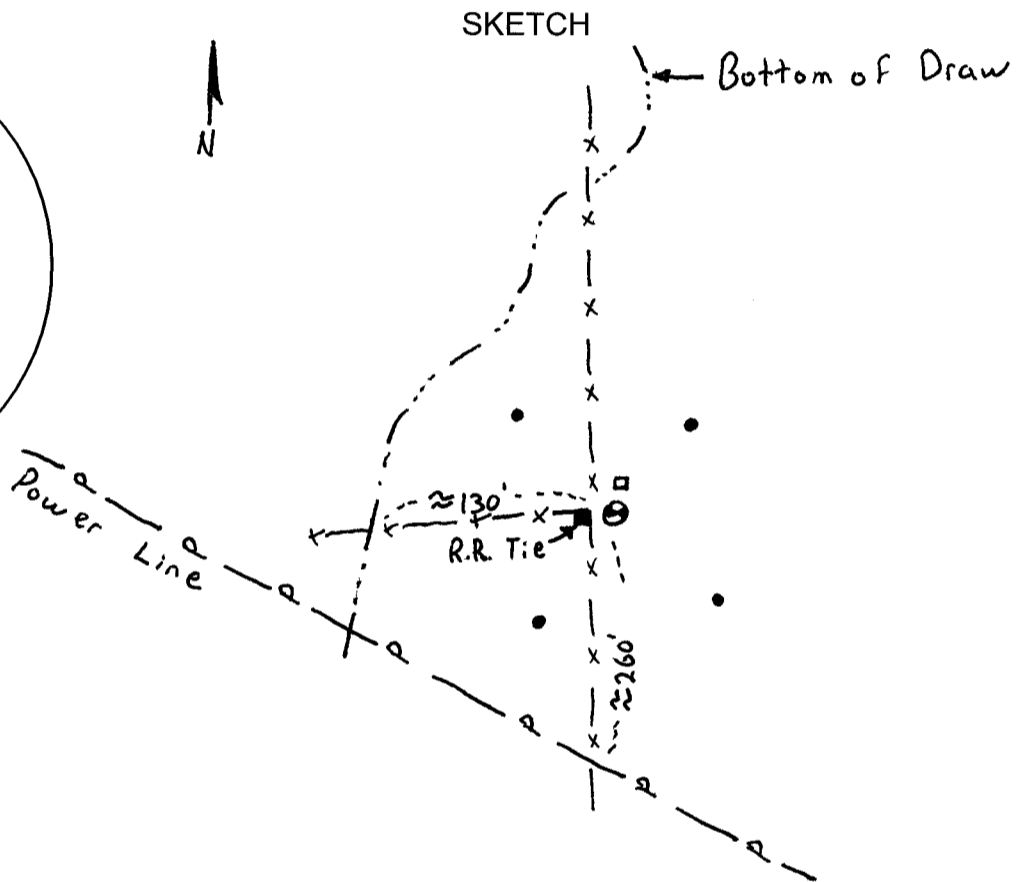
Previous Renewals / Surveys, etc.

Corner originally set by B.J. Pengra under contract No. 119 dated February 15, 1867. His record reads: Set stone, 24 x 10 x 8 as 1/4 section corner. In 1972 David Krumbain called for a 2" iron pipe but did not say found or set. (See folder 72.) In 1980 David Krumbain remonumented the 2" pipe with a brass cap. (See folder 429.)

Monument and Accessories found: (condition and source)
 The brass cap from folder 429 firmly in place.



- ⊙ = Brass Cap
- = Guard Post
- = Rebar Reference



MONUMENT (S) AND ACCESSORIES SET (Procedures and Description)
 I held the brass cap set by Dave Krumbain in 1980.

For references, I set four 5/8" by 24" rebars with 1.25" orange plastic caps stamped WTS and 56295LS as described below:

- an iron rebar bears N43°17'17"W, 25.62 feet;
- an iron rebar bears N38°13'44"E, 21.97 feet;
- an iron rebar bears S41°33'00"E, 27.81 feet;
- an iron rebar bears S38°52'43"W, 36.64 feet;

The monument and references were tied using a Trimble R7/R8 RTK GPS system.

Location and comments

Compass Declination

RECEIVED BY:
 Morrow County Surveyor
 Date: 9-21-2017
 Rec'd By: S.K.H.
 No. 2526T17
 Survey No. 2017-1806D

Firm / Agency
 Witness Tree Surveying
 Address
 P.O. Box G
 Pilot Rock, OR 97868

Surveyor's Seal

REGISTERED PROFESSIONAL LAND SURVEYOR

Stephen K. Haddock

OREGON
 JULY 9, 2001
STEPHEN K. HADDOCK
 56295LS
 RENEWS: 6-30-19