

**OREGON CORNER RESTORATION FORM**

Section 26 Township 2S Range 26E  
 County Morrow Date: August 17, 2017

Corner Designation: 2S26R17

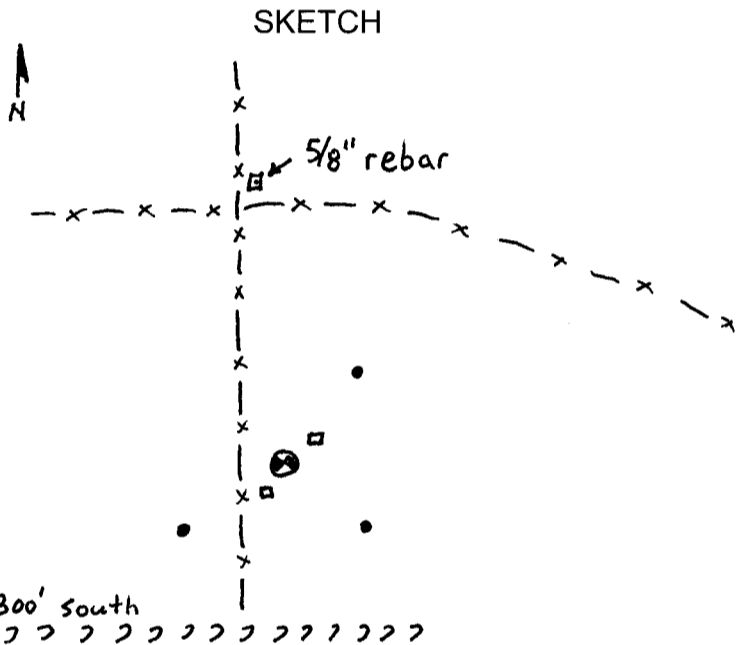
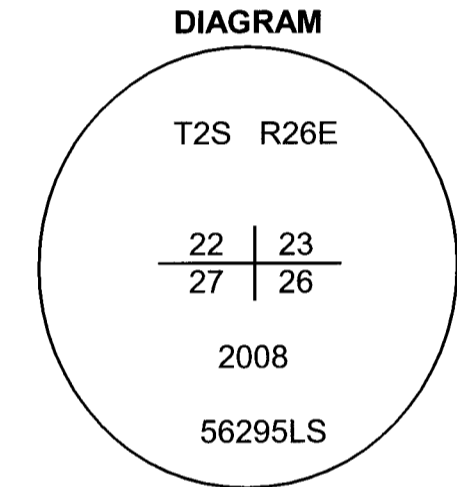
Corner to sections 22, 23, 26, and 27, T2S, R26E,  
 W.M., Morrow County, Oregon.

Previous Renewals / Surveys, etc.

Corner originally set by B.J. Pengra under contract No. 119 dated February 15, 1867. His record reads: Set stone 14x12x6 as corner to sections 22, 23, 26 & 27. In 1912 D.V.S. Reid set a rock 13x7x5 inches and made four references as follows: NE 12 links - iron 12 inches long with deposit of broken clear glass; SW 12 links 3/4 inch galvanized iron pipe 8 inches long with pint of stone coal; NW 12 links - deposit of broken brown glass; SE 12 links - deposit of broken clear glass; In survey C-97-K Dave Krumbein established a position for this corner by proportion but set no monument. His position has subsequently been used in surveys C-146-K, C-221-K, the Plat of Ployhar Estates and partition Plat 2005-06. In 2008 I set a brass cap at the corner point held by the record surveys above and 4 references as described below under survey 1526C.

Monument and Accessories found: ( condition and source )

The brass cap and references reported in 2008 and the NE and SW references by Reid.



- ⊙ = Brass Cap
- = Rebar reference
- = Reid bearing object

Gully ≈ 300' south

**MONUMENT (S) AND ACCESSORIES SET (Procedures and Description)**

None: This certificate is being recorded to report the finding of Reid's references.

I found the references from 2008 and two of the references set by Reid as follows:

- an iron rebar bears N41°30'19"E, 41.64 feet;
- an iron rebar bears S48°29'56"E, 31.49 feet;
- an iron rebar bears S44°34'19"W, 47.91 feet;
- a 5/8" iron rebar of unknown origin bears N02°45'30"W 213.96 feet on the north side of a four way fence intersection.
- a 1" iron pin surrounded by broken clear glass bears N68°12'10"E, 9.64 feet;
- a 3/4" iron pipe and chopped stone coal bears S22°11'37"W, 8.02 feet;

The monument was set and the references were tied using a Trimble R7/R8 RTK GPS.

Location and comments

Compass Declination

RECEIVED BY:  
Morrow County Surveyor  
 Date: 9-21-2017  
 Rec'd By: S.K.H.  
 No. 20 2526 R17  
 Survey No. 2017-1806D

Firm / Agency  
Witness Tree Surveying  
 Address  
P.O. Box G  
Pilot Rock, Or. 97868

Surveyor's Seal

**REGISTERED  
 PROFESSIONAL  
 LAND SURVEYOR**

*Stephen K. Haddock*

OREGON  
 JULY 9, 2001  
 STEPHEN K. HADDOCK  
 56295LS

RENEWS: 6-30-19