

OREGON CORNER RESTORATION FORM:

SECTION 16, TOWNSHIP 2S, RANGE 25E 26E
 COUNTY MORROW, DATE JUNE 1, 2001

CORNER DESIGNATION: D-1

T25
 R25E R26E
 1/4 1 | 6

CONDITION REPORT ONLY
 _____ NOT FOUND
 RENEWED
 UNRECORDED
 SURVEYED IN
 REFERENCED

PREVIOUS RENEWALS, SURVEYS, ETC.

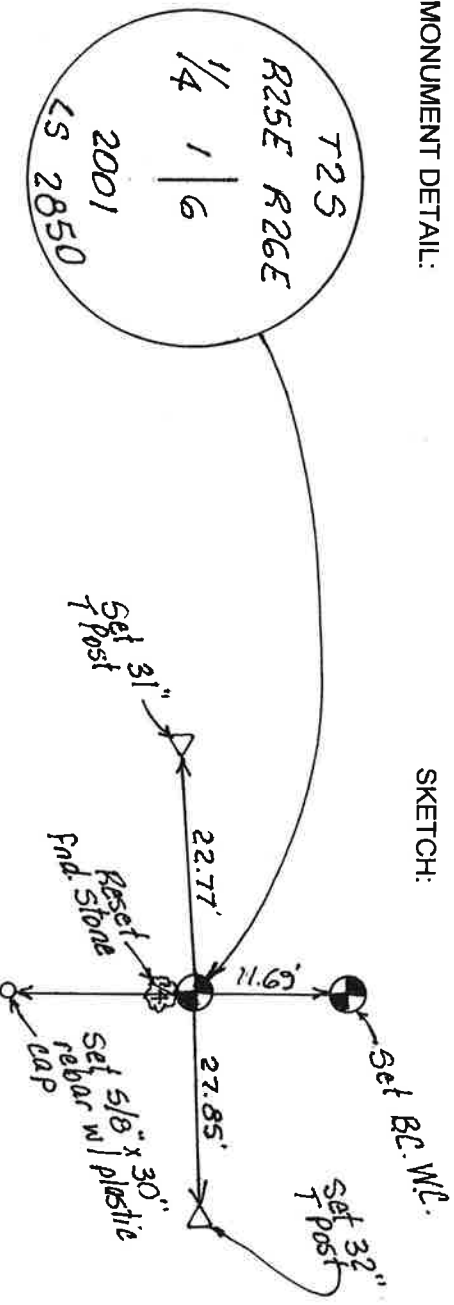
Original 1867 GLO Survey. By G.J. Pengra. He set stone 20" x 18" x 12". William Wells 1997 visit to this corner found scribed stone marked 1/4 in a rock jack. He said it was near the SE corner of jack. He also said the stone was returned to where he found it in the rock jack.

MONUMENTS AND ACCESSORIES FOUND: Condition and Source

I found a collapsing Rock Jack with rocks spilling out. Oliver Devrin says he remembers helping his uncle build this rock jack. He does not remember a scribed stone. I found the scribed stone that both Pengra and Wells described about 5 feet South of the SE corner of the rock jack with the 1/4 scribe down. There are barns and the cow trails that caused them on both sides of fences running both West and North from the rock jack which would indicate long term use of this rock jack as the corner.

MONUMENT DETAIL:

SKETCH:



NEW MONUMENT SET (PROCEDURES AND DESCRIPTION):

Set 2 3/8" Brass Cap on a 1" x 24" Galvanized pipe, stamped as shown. After comparing the location of the SE corner of the found Rock Jack with the data of a GPS Search and Survey along this Range Line, I determined that this rock jack corner was a reasonable fit with the record. I feel the best remaining evidence of the original location of the found stone is represented by the SE corner of the collapsing rock jack. I placed scribed stone on South side of Brass Cap. Raised stone mound around both.

NEW ACCESSORIES SET:

1. Set a 2 3/8" Brass on a 1" x 24" galvanized pipe. Witness Corner, N00°05'12"E 11.69 ft.
2. Set a 32" long T post N 88°19'17"E 27.85'
3. Set a 5/8" x 30" steel rebar with plastic cap marked LS 2850, S 00°05'12"W 31.58 ft.
4. Set a 31" long T post S 87°38'44"W 22.77'
5. Reset the found 20" x 18" x 12" stone on the South side of the Brass Cap set at this corner. The original scribes can be read from the South.

LOCATION AND COMMENTS: COMPASS DEC. Not Observed SURVEYOR'S SEAL

RECEIVED BY

Morrow County Surveyor

Date 8-01-01

Rec'd By RVA

No. C-1314-M

FIRM: COPPOCK SURVEYING

P. O. BOX 340
 HERMISTON, OR 97838
 541-567-6974

PARTY CHIEF: J COPPOCK
 NOTE KEEPER: S. BENEFIT
 WITNESS: S. BENEFIT

REGISTERED
 PROFESSIONAL
 LAND SURVEYOR

OREGON
 JANUARY 20, 1998
 JUDSON L. COPPOCK
 2850

RENEWAL DATE: DEC. 31/09