

OREGON CORNER RESTORATION FORM

CORNER DESIGNATION: T2S, R25E, E-9

SOUTHEAST CORNER OF SECTION 5, TOWNSHIP 2 SOUTH, RANGE 25 EAST, W.M., MORROW COUNTY, OREGON.

PREVIOUS RENEWALS / SURVEYS, ETC.:

T2S R25E WAS ORIGINALLY SURVEYED BY U.S. DEPUTY SURVEYOR B.J. PENGRA UNDER CONTRACT NO. 119 DATED FEBRUARY 15, 1867. THE NOTES READ, "SET CHARRED STAKE IN RAISED MOUND AS CORNER TO SECTIONS 4, 5, 8 & 9".

MONUMENT AND ACCESSORIES FOUND:

COMPUTED CORNER LOCATION BY HOLDING BRASS CAP AT THE NE CORNER OF SECTION 5 AND THE RECOVERED POST LOCATION AT THE SOUTH QUARTER CORNER OF SECTION 5. I THEN PROJECT LINES DUE SOUTH AND DUE EAST. DUG AT THIS COMPUTED INTERSECTION AND FOUND REMAINS OF ORIGINAL 4" X 3" CHARRED WOOD POST, 18" BELOW THE SURFACE. FALLS WITHIN 1-FOOT OF THE EXISTING LINE BETWEEN ACTIVE AND FALLOW WHEAT FIELDS.

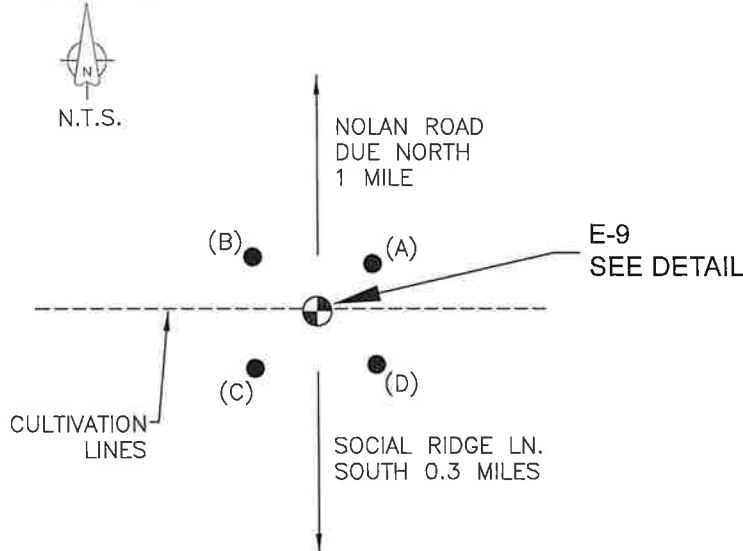
MONUMENT AND ACCESSORIES SET:

OVER REMAINS OF CHARRED WOOD POST, SET 2-3/8" BRASS CAP ON 2-3/8" O.D. X 20" GALVANIZED IRON PIPE, ±18" BELOW GRADE, MARKED AS SHOWN IN DETAIL BELOW. ESTABLISHED 4 REFERENCE MONUMENTS AS FURTHER DESCRIBED AND DETAILED BELOW.

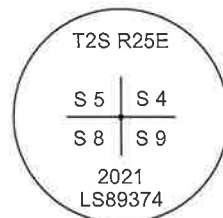
REFERENCES:

- (A) SET 5/8" x 24" STEEL REBAR WITH 1-1/4" PINK PLASTIC CAP MARKED KENNY LS89374, ± 16" BELOW SURFACE. QUARTER CORNER BEARS S49°47'41"W, 12.63'.
- (B) SET 5/8" x 24" STEEL REBAR WITH 1-1/4" PINK PLASTIC CAP MARKED KENNY LS89374, ± 16" BELOW SURFACE. QUARTER CORNER BEARS S49°58'48"E, 14.52'.
- (C) SET 5/8" x 24" STEEL REBAR WITH 1-1/4" PINK PLASTIC CAP MARKED KENNY LS89374, ± 16" BELOW SURFACE. QUARTER CORNER BEARS N47°51'25"E, 14.53'.
- (D) SET 5/8" x 24" STEEL REBAR WITH 1-1/4" PINK PLASTIC CAP MARKED KENNY LS89374, ± 16" BELOW SURFACE. QUARTER CORNER BEARS N48°24'00"W, 13.73'.

DIAGRAM:



E-9 DETAIL:



FIRM/AGENCY:

KENNY LAND SURVEYING
P.O. BOX 447 HEPPNER,
OR 97836
PARTY CHIEF: MATT KENNY

REGISTERED
PROFESSIONAL
LAND SURVEYOR

OREGON
JAN 12, 2016
MATTHEW PATRICK KENNY
89374PLS

RENEWS: 6-30-21

LOCATION AND COMMENTS:

CORNER IS APPROXIMATELY 1 MILE SOUTH OF NOLAN ROAD, 0.63 MILES WEST OF CLARKS CANYON ROAD, AND 0.3 MILES NORTH OF SOCIAL RIDGE LANE.

BEARING BASE:

REPORTED BEARINGS ARE GRID. NAD 83(11) OREGON NORTH STATE PLANE