

# OREGON CORNER RESTORATION FORM

CORNER DESIGNATION: T2S, R25E, C-9

EAST QUARTER CORNER OF SECTION 5, TOWNSHIP 2 SOUTH, RANGE 25 EAST, W.M., MORROW COUNTY, OREGON.

## PREVIOUS RENEWALS / SURVEYS, ETC.:

T2S R25E WAS ORIGINALLY SURVEYED BY U.S. DEPUTY SURVEYOR B.J. PENGRA UNDER CONTRACT NO. 119 DATED FEBRUARY 15, 1867. THE NOTES READ, "SET CHARRED STAKE IN RAISED MOUND AS 1/4 SEC. CORNER".

## MONUMENT AND ACCESSORIES FOUND:

SEARCHED INTERSECTION OF FIELD LINES NORTH AND WEST WITH INCOMING FENCE LINE FROM THE EAST. POSITION MATCHED PROPORTIONATE LOCATION WITHIN 3.4 FEET. DUG 6' DIAMETER X 2' DEEP HOLE IN SEARCH OF ORIGINAL EVIDENCE. UNCOVERED SMALL BITS OF WOOD REMAINS AND A FEW FENCING STAPLES. EXACT POSITION OF POST COULD NOT BE DETERMINED. ACCEPTED INTERSECTION LOCATION AS BEST AVAILABLE EVIDENCE OF OBLITERATED QUARTER CORNER LOCATION.

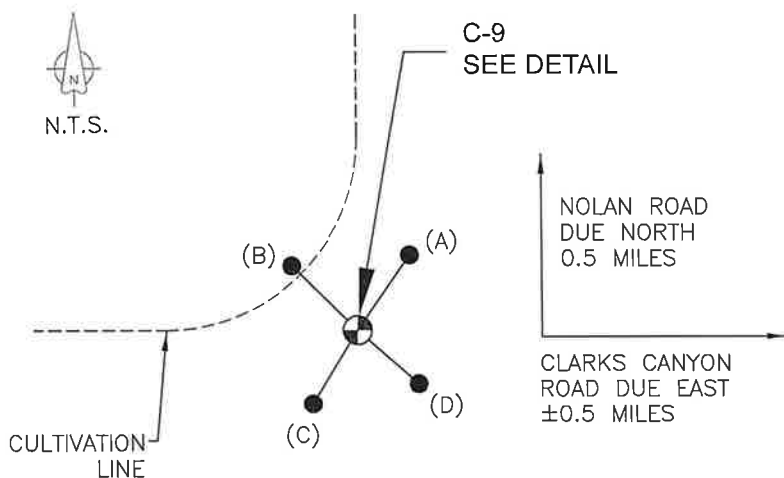
## MONUMENT AND ACCESSORIES SET:

AT INTERSECTION OF FIELD LINES AND OVER BITS OF WOOD AND FENCE STAPLES, SET 2-3/8" BRASS CAP ON 2-3/8" O.D. X 20" GALVANIZED IRON PIPE, ±16" BELOW GRADE, MARKED AS SHOWN IN DETAIL BELOW. ESTABLISHED 4 REFERENCE MONUMENTS AS FURTHER DESCRIBED AND DETAILED BELOW.

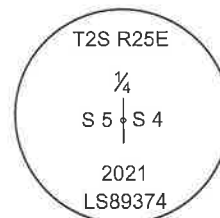
## REFERENCES:

- (A) SET 5/8" x 24" STEEL REBAR WITH 1-1/4" PINK PLASTIC CAP MARKED KENNY LS89374, ± 16" BELOW SURFACE. QUARTER CORNER BEARS S34°56'32"W, 14.27'.
- (B) SET 5/8" x 24" STEEL REBAR WITH 1-1/4" PINK PLASTIC CAP MARKED KENNY LS89374, ± 16" BELOW SURFACE. QUARTER CORNER BEARS S45°32'30"E, 14.29'.
- (C) SET 5/8" x 24" STEEL REBAR WITH 1-1/4" PINK PLASTIC CAP MARKED KENNY LS89374, ± 16" BELOW SURFACE. QUARTER CORNER BEARS N31°19'58"E, 13.48'.
- (D) SET 5/8" x 24" STEEL REBAR WITH 1-1/4" PINK PLASTIC CAP MARKED KENNY LS89374, ± 16" BELOW SURFACE. QUARTER CORNER BEARS N48°31'02"W, 12.68'.

## DIAGRAM:



## C-9 DETAIL:



## FIRM/AGENCY:

KENNY LAND SURVEYING  
P.O. BOX 447 HEPPNER,  
OR 97836  
PARTY CHIEF: MATT KENNY

**REGISTERED  
PROFESSIONAL  
LAND SURVEYOR**

*Matt Kenny*

OREGON  
JAN 12, 2016  
MATTHEW PATRICK KENNY  
89374PLS

RENEWS: 6-30-21

## LOCATION AND COMMENTS:

CORNER IS APPROXIMATELY 0.5 MILES SOUTH OF NOLAN ROAD, AND 0.5 MILES WEST OF CLARKS CANYON ROAD. LOCATED AT N-W WHEAT FIELD INTERSECTION.

## BEARING BASE:

REPORTED BEARINGS ARE GRID. NAD 83(11) OREGON NORTH STATE PLANE

4-27-21 BY: MPK NO: 2525C9 SURVEY NO: 2021-1932C