

OREGON CORNER RESTORATION FORM

CORNER DESIGNATION: T2N, R27E, V-13

NORTHEAST CORNER OF SECTION 33, TOWNSHIP 2 NORTH, RANGE 27 EAST, W.M.,
MORROW / UMATILLA COUNTY, OREGON.

PREVIOUS RENEWALS / SURVEYS, ETC.:

T2N R27E WAS ORIGINALLY SURVEYED BY U.S. DEPUTY SURVEYOR EBENEZER E. HAFT UNDER CONTRACT NO. 93 DATED SEPTEMBER 11, 1860. THE NOTES READ, "SET A POST FOR CORNER TO SECS 27, 28, 33 & 34 IN MOUND WITH TRENCH AND PITS AND DEPOSIT 1 PINT OF CHARCOAL AS PER INSTRUCTIONS ON TOP OF BLUFF 100 FT HIGH". FOLDER 1096 (MORROW COUNTY) BY D.V.S. REID DATED APRIL 16, 1912: FOUND THE CHARCOAL DEPOSIT AND REESTABLISHED BY SETTING 2 PIECES OF MOWER SICKLE BAR INTO CHARCOAL DEPOSIT AND 6X6X5 ROCK MARKED WITH A CROSS. HE THEN SET 4 STONE REFERENCES 10 LINKS DISTANT AND 2 FEET DEEP, AS FOLLOWS: NE-ROCK 8X6X5 MARKED H; NW-ROCK 12X6X4 MARKED Δ; SW-ROCK 10X8X5 MARKED A; SE-ROCK 8X6X5 MARKED □. ALL REFERENCES HAD BROKEN GLASS DEPOSITED OVER TOP AT 1-FOOT DOWN. IN SURVEY D-028-C (UMATILLA COUNTY) BY STANLEY WALLULIS DATED MAY OF 1967; SET A 5/8" PIN 2 FEET UNDERGROUND. HIS NOTES READ, "APPROXIMATE CORNER POSITION DETERMINED BY ORIGINAL FIELD NOTES REFERRING TO BUTTER CREEK, TOE AND TOP OF BLUFF". IN FOLDER 1808 (MORROW COUNTY) BY BRET ELITHORP DATED DECEMBER 18, 2014: HE COMPUTED THE LOCATION BY DOUBLE PROPORTION AND MENTIONS THE FOUND 5/8" PIN BEING N62°57'12"W, 57.56 FEET FROM COMPUTED LOCATION. IN CORNER RESTORATION FORM 2N27V13 BY STEPHEN HADDOCK DATED APRIL 7, 2018: FOUND A SECTION OF SICKLE BAR SET BY REID ALONG SIDE STONE 12X10X6. HE THEN SET A 2-1/2" BRASS CAP OVER THE SICKLE BAR AND MADE THE FOLLOWING 5/8" X 24" IRON REBAR REFERENCES: N50°24'26"W, 111.66' NEAR BASE OF POWER POLE: S40°37'00"W, 27.32' 1-FOOT BELOW GROUND; S46°03'47"E, 31.09' 1.5 FEET BELOW GROUND. MAKES MENTION OF THE 5/8" PIN AS BEING N54°55'43E, 35.20' FROM FOUND SICKLE BAR.

MONUMENT AND ACCESSORIES FOUND:

FOUND RECORD SICKLE BARS 18" BELOW GROUND WITH 6X6X5 ROCK MARKED WITH CROSS ON THE SOUTH SIDE OF SICKLE BAR. FOUND FOUR ROCK REFERENCES NE, NW, & SW AS REPORTED BY REID. FOUND BROKEN AND SCARRED ROCK AT THE SE REFERENCE LOCATION, NO MARKS VISIBLE. SIZE COINCIDES WITH THE REID RECORD OF 8X6X5. ALL REFERENCES HAD BROKEN GLASS OVER TOP AT ABOUT 1-FOOT DOWN. FOUND 5/8" PIN BY WALLULIS, BEARS N46°08'32"W, 29.09' FROM CORNER; BRASS CAP BY HADDOCK BEARS S89°30'17"W, 49.51' FROM CORNER. CUT TOP OFF CAP AND DEPOSITED AT SIDE OF PIPE. 5/8" REBAR W/OPC AT BASE OF POWER POLE BY HADDOCK BEARS N63°00'12"W, 153.20' FROM CORNER. 5/8" REBAR W/OPC BY HADDOCK BEARS S50°59'12"W, 34.52' FROM CORNER. COULD NOT FIND THE SW REFERENCE REPORTED BY HADDOCK.

MONUMENT AND ACCESSORIES SET:

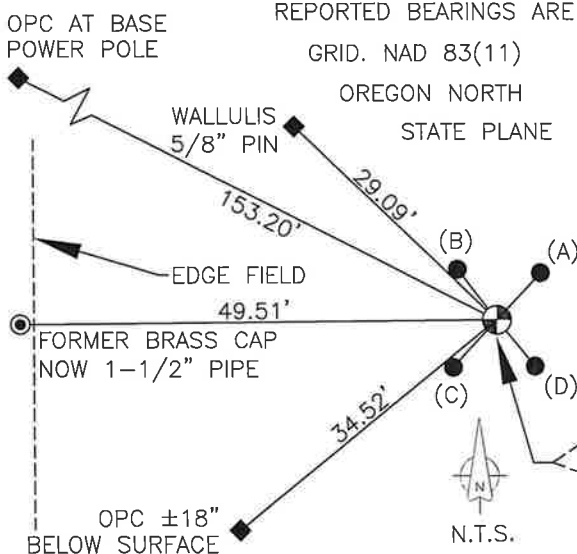
OVER SICKLE BAR, SET 2-3/8 INCH BRASS CAP ON 2-3/8" (O.D.) X 20" GALVANIZED IRON PIPE, 24" BELOW GRADE, MARKED AS SHOWN IN DETAIL BELOW. SET ROCK AT SOUTH SIDE OF PIPE. ESTABLISHED 4 REFERENCE MONUMENTS AT THE FOUND ROCK LOCATIONS AS ESTABLISHED BY REID AS FURTHER DESCRIBED AND DETAILED BELOW.

REFERENCES:

- (A) IN LOCATION OF FOUND 8X6X5 ROCK MARKED H, SET 5/8" x 24" STEEL REBAR WITH 1-1/2" ALUMINUM CAP MARKED KENNY LS89374, ±18" BELOW SURFACE. PLACED ROCK AT SIDE OF REBAR. CORNER BEARS S42°52'25"W, 6.71'.
- (B) IN LOCATION OF FOUND 12X6X4 ROCK MARKED Δ, SET 5/8" x 24" STEEL REBAR WITH 1-1/2" ALUMINUM CAP MARKED KENNY LS89374, ±18" BELOW SURFACE. PLACED ROCK AT SIDE OF REBAR. CORNER BEARS S37°35'13"E, 6.67'.
- (C) IN LOCATION OF FOUND 10X8X5 ROCK MARKED A, SET 5/8" x 24" STEEL REBAR WITH 1-1/2" ALUMINUM CAP MARKED KENNY LS89374, ±18" BELOW SURFACE. PLACED ROCK AT SIDE OF REBAR. CORNER BEARS S42°55'50"W, 6.68'.
- (D) IN LOCATION OF FOUND BROKEN AND SCARRED 8X6X5 ROCK, SET 5/8" x 24" STEEL REBAR WITH 1-1/2" ALUMINUM CAP MARKED KENNY LS89374 ±18" BELOW SURFACE. PLACED ROCK AT SIDE OF REBAR. CORNER BEARS N39°33'30"W, 6.20'.

DIAGRAM:

BEARING BASE:



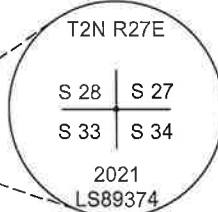
LOCATION AND COMMENTS:

LOCATED ON TOP OF BLUFF NEAR THE INTERSECTION OF HIGHWAY 207 AND BUTTER CREEK ROAD. LOCATED APPROXIMATELY 150' E. OF DIRT FARM ACCESS ROAD AND ABOUT 50' E. INTO WHEAT FIELD.

FIRM/AGENCY:

KENNY LAND SURVEYING
P.O. BOX 447 HEPPNER,
OR 97836
PARTY CHIEF: MATT KENNY
WITNESS: STEVE HADDOCK

V-13 DETAIL



**REGISTERED
PROFESSIONAL
LAND SURVEYOR**

Matt Kenny

OREGON
JAN 12, 2016
MATTHEW PATRICK KENNY
89374PLS

RENEWALS: 6-30-21