

OREGON CORNER RESTORATION FORM

T2N R27E Z1

Section 31, Township 2N, Range 27E,
County Morrow, Date January 31, 2005.

—	Condition Report
—	Not Found
—	Re monumented
—	Unrecorded
<u>X</u>	Surveyed in
<u>X</u>	Referenced out

Township corner common to Townships 1 and 2 North Ranges 26 and 27 East, W.M., Morrow County, Oregon.

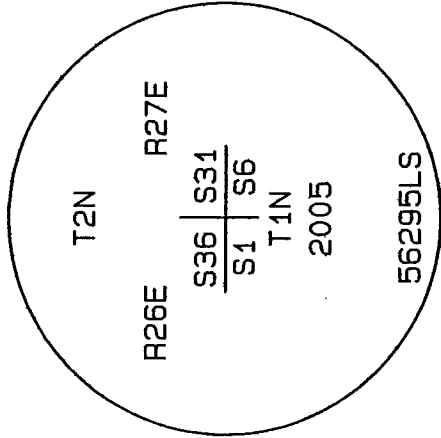
Previous Renewals / Surveys, etc.

The corner was originally set by Ebenezer Haft under Contract No. 93 dated September 11, 1860. His record Reads: Set post for corner to Townships 1 and 2 North Ranges 26 and 27 East in mound with trench and pits and deposited 1 pint charcoal as per instructions.

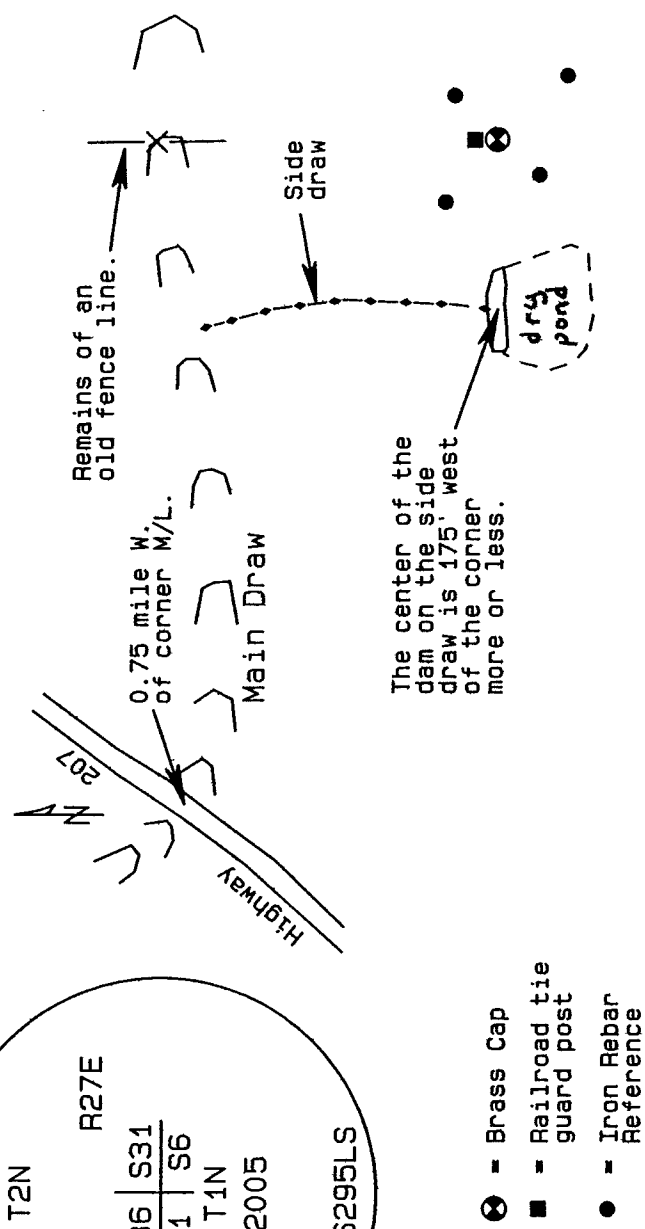
Monument and accessories found: (Condition and source)

None. This position falls in a farmed field that has been farmed for many years.

DIAGRAM



SKETCH



Monument and accessories set: (Procedures and description)

At the proportionate point I set a 1/4" x 2" PK nail with a 1 1/2" brass washer attached into the bedrock. The washer is stamped WTS and 56295LS. Over this I set a 2 3/8" x 30" galvanized iron pipe with a 2 3/8" brass cap stamped as shown above. The cap extends approximately 3" above the surface of the ground. I set a railroad tie guard post approximately 2 ft. north of the post with a monument sign attached.

For references I set four 5/8" x 24 " iron rebars with 1.25" orange plastic caps attached stamped WTS and 56295LS:

- an iron rebar bears N38°19'00"E 27.28 feet approximately 18" below the surface;
 - an iron rebar bears N49°35'17"W 42.04 feet approximately 18" below the surface;
 - an iron rebar bears S37°46'10"W 27.06 feet approximately 18" below the surface;
 - an iron rebar bears S52°48'54"E 42.59 feet approximately 18" below the surface;
- The monument and references were tied with a Trimble R7/R8 GPS system using static surveying procedures. Bearings and distances are grid.

Location and Comments

SPC Oregon North, NAD 83-91
 Northing = 707,565.72 ift
 Easting = 8,458,488.19 ift

Compass Declination

Surveyor's Seal

Witnessed By:

RECEIVED BY:
 Umatilla County Surveyor

Date: 5-05
 Rec'd By: KK
 No. 05-111-C

Firm / Agency
 Witness Tree Surveying
 P.O. Box G
 Pilot Rock, OR 97868
 Party Chief
 Stephen K. Haddock, PLS

REGISTERED
 PROFESSIONAL
 LAND SURVEYOR

Stephen K. Haddock

OREGON
 JULY 9, 2001
 STEPHEN K. HADDOCK
 56295LS

RENEWAL DATE 6-30-05