

OREGON CORNER RESTORATION FORM

SECTION 28 TOWNSHIP 2 N RANGE 25 E CORNER LOCATION CODE R-9

COUNTY: MORROW DATE: 1995

CORNER DESIGNATION

N. W. CORNER

CONDITION REPORT ONLY

NOT FOUND

RENEWED

UNRECORDED

SURVEYED IN

REFERENCED OUT

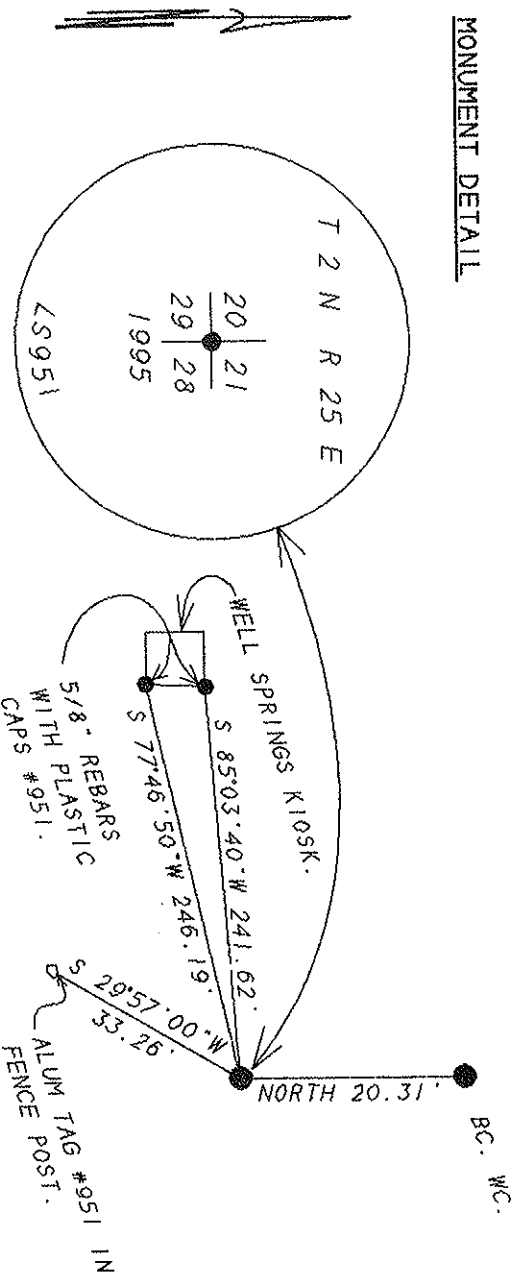
PREVIOUS RENEWALS/SURVEYS, ETC.

ORIGINAL SURVEY BY THOMPSON IN 1867. CONTRACT NO. 122.
THIS SURVEY BY EDWARDS FOR MORROW COUNTY AND
CHARLIE DOHERTY,
CO. # B-1034-E.

MONUMENTS & ACCESSORIES FOUND: Condition and Source

NO EVIDENCE FOUND. OTHER THAN IMMIGRANT ROAD.

MONUMENT DETAIL



MONUMENT SET (Procedures and Description)

SET A 1" X 24" GALVANIZED PIPE WITH A 2 3/8" BRASS CAP STAMPED AS ABOVE AND 0.2' BELOW SURFACE OF GRAVEL ROAD.
SEE MY SURVEY # B-1034-E.

NEW ACCESSORIES

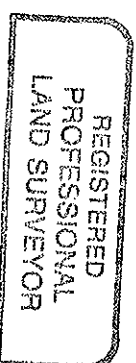
A 5/8" REBAR WITH A PLASTIC CAP #951 BEARS S 77'46.56" W 246.19 FEET.
A 5/8" REBAR WITH A PLASTIC CAP #951 BEARS S 85'03.40" W 241.62 FEET.
AN ALUM. TAG #951 ON A FENCE POST BEARS S 29'57.00" W 33.26 FEET.
A 1" X 30" GALVANIZED PIPE WITH A 2 3/8" BC. (WC) BEARS NORTH 20.31 FEET.

LOCATION & COMMENTS

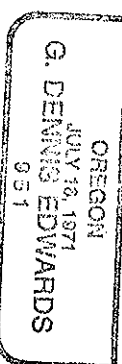
FROM THE INTERSECTION OF WELL SPRINGS ROAD AND IMMIGRANT ROAD. GO WEST ALONG IMMIGRANT ROAD 1/2 MILE TO THE CORNER.

SURVEYOR'S SEAL

COMPASS DEC. _____
FIRM EDWARDS SURVEYING
P. O. BOX 763
HERMISTON, OR. 97838
PARTY CHIEF D. EDWARDS
NOTES J. COPPOCK
WITNESS J. COPPOCK



G. Denning Edwards



RECEIVED BY

Morrow County Surveyor

Date 2/95

Rec'd By DE

No. R-9