

OREGON CORNER RESTORATION FORM

Section 27 Township 1S Range 26E
County Morrow Date: September 29, 2015

Corner Designation: 1S26T13

1/4 corner common to sections 27 and 28 T1S, R25E,
W.M., Morrow County, Oregon.

Condition Report Only
Not found
Remonumented
Unrecorded
Surveyed in
Referenced out

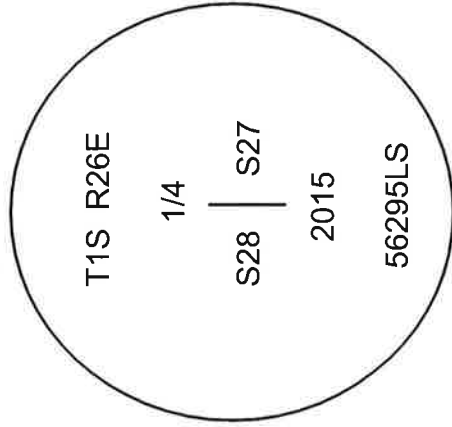
Previous Renewals / Surveys, etc.

Corner was originally set by B.J. Pengra under contract No. 119 Dated February 16, 1867.
His record reads: Set a stone 16x8x6 inches as 1/4 Section corner.

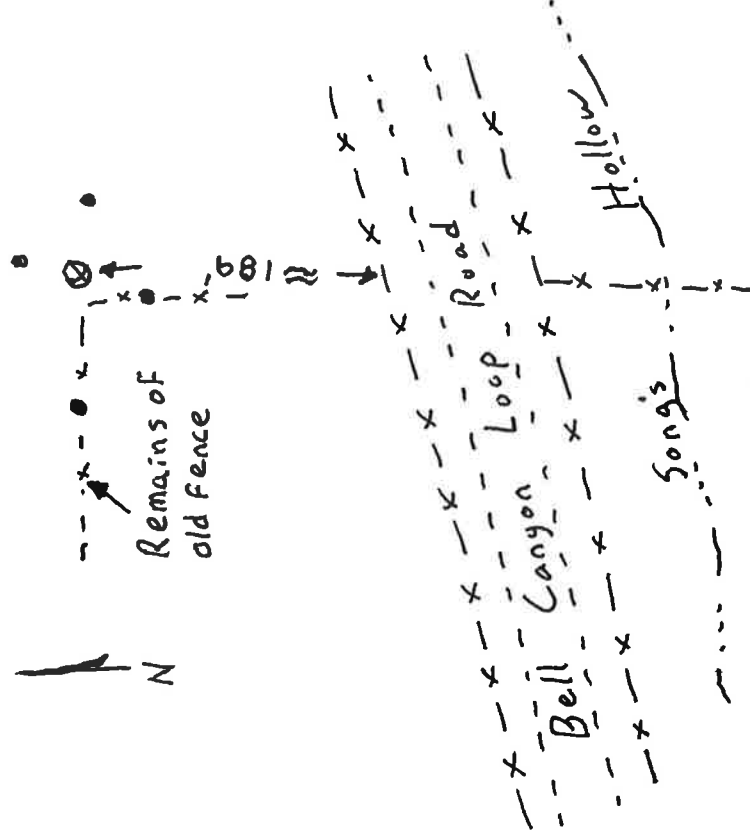
Monument and Accessories found: (condition and source)

I found the record stone, unmarked, firmly set in a mound of stone on the east edge of the remains of a fence with fences running south and west.

DIAGRAM



SKETCH



- ⊗ = Brass Cap in stone mound.
- = Rebar Reference

MONUMENT (S) AND ACCESSORIES SET (Procedures and Description)

At the position of the original stone, I set a 2 1/2" brass cap on a 1 1/2" x 30" galvanized iron pipe 30 inches in the ground stamped as shown in the diagram above.

For references, I set four 5/8" by 24" rebars with 1.25" orange plastic caps stamped WTS and 56295LS as described below:

- a rebar bears S87°28'03"W, 41.20 feet in the remains of the old fence;
- a rebar bears N12°42'08"E, 26.24 feet;
- a rebar bears S85°41'43"E, 23.56 feet;
- a rebar bears S8°37'11"W, 22.54 feet in the remains of the old fence;

Measurements to the cap and references were made with a Trimble RTK GPS system.

Location and comments
Witnessed by:

Compass Declination

Surveyors Seal

RECEIVED BY:
Morrow County Surveyor
Date: 9-30-2015
Rec'd By: S.K.H.
No. 1526T13
Survey No. 2015-1747C

Firm / Agency
Morrow County Surveyor
Address
P.O. Box G
Pilot Rock, Or. 97868
Party Chief
Stephen K. Haddock

REGISTERED PROFESSIONAL LAND SURVEYOR
Stephen K. Haddock
OREGON
JULY 9, 2001
STEPHEN K. HADDOCK
56295LS
RENEWALS: 6-30-17