

OREGON CORNER RESTORATION FORM

Section 10 Township 1S Range 26E
 County Morrow Date: June 2, 2018

Corner Designation: 1S26G17

Condition Report Only
 Not found

1/4 corner common to sections 10 and 11 T1S, R26E,
 W.M., Morrow County, Oregon.

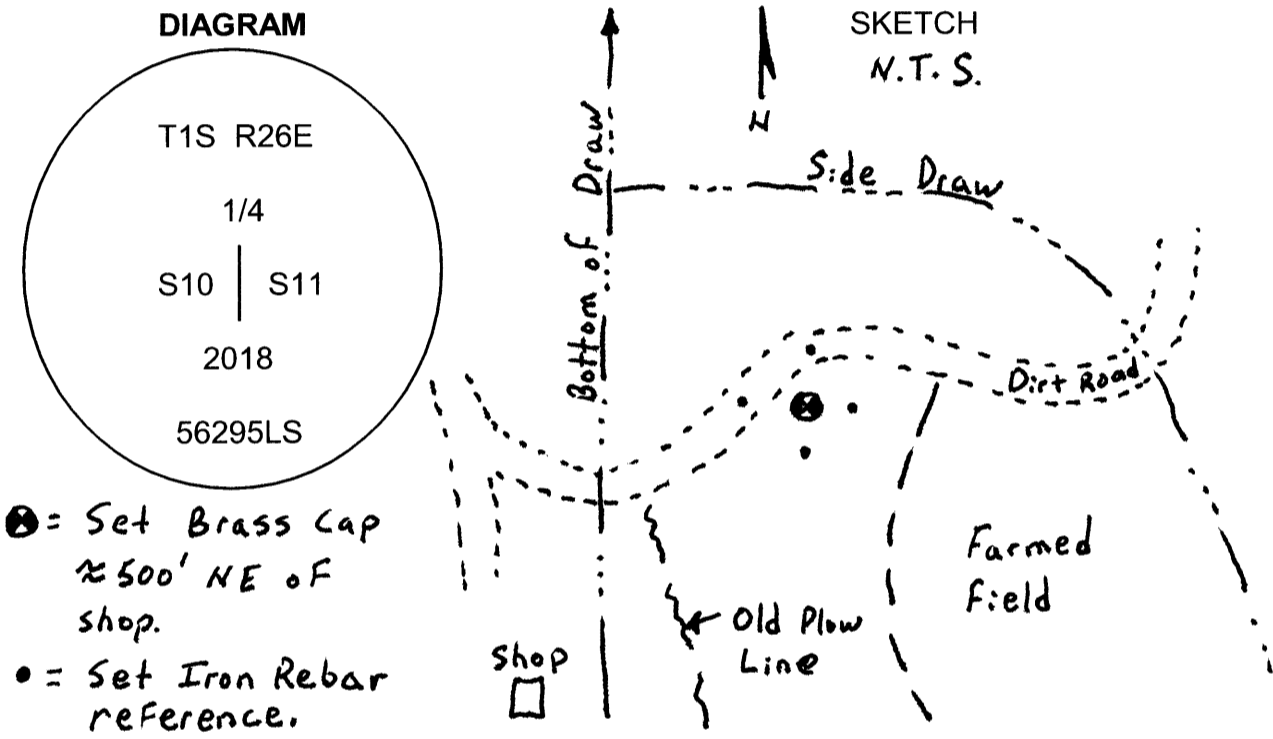
Remonumented
 Unrecorded
 Surveyed in
 Referenced out

Previous Renewals / Surveys, etc.

Corner was originally set by B.J. Pengra under contract No. 119 Dated February 18, 1867.
 His record reads: Set stone 10x8x8 inches as 1/4 Section Corner.

Monument and Accessories found: (condition and source)

None. This point falls inside an old farm field identified by an old plow berm running north-south to the west of the corner.



- ⊙ = Set Brass Cap
 ≈ 500' NE of
 shop.
- = Set Iron Rebar
 reference.

MONUMENT (S) AND ACCESSORIES SET (Procedures and Description)

At the position determined by single proportionate measure I set a 2 1/2" brass cap on a 2 1/2" O.D. galvanized iron pipe 30 inches long set flush with the ground and stamped as shown above.

For references, I set four 5/8" by 24" rebars with 1.25" orange plastic caps stamped WTS and 56295LS as described below:

- a rebar bears N77°46'19"W, 27.15 feet in the center of a dirt farm field road;
- a rebar bears N00°37'16"E, 25.05 feet in the center of a dirt farm field road;
- a rebar bears S72°48'56"E, 19.44 feet;
- a rebar bears S02°09'11"W, 23.35 feet;

Measurements to the cap and references were made with a Trimble RTK GPS system.

Location and comments
 Witnessed by:

Compass Declination

Surveyors Seal

RECEIVED BY:
 Morrow County Surveyor
 Date: 6-5-2018
 Rec'd By: S.K.H.
 No. 1S26G17
 Survey No. 2018-1829C

Firm / Agency
 Witness Tree Surveying
 Address
 P.O. Box G
 Pilot Rock, Or. 97868
 Party Chief

**REGISTERED
 PROFESSIONAL
 LAND SURVEYOR**

Stephen K. Haddock

OREGON
 JULY 9, 2001
STEPHEN K. HADDOCK
 56295LS

RENEWS: 6-30-19