

OREGON CORNER RESTORATION FORM

SECTION 4 TOWNSHIP 1 S RANGE 24 E CORNER LOCATION CODE C-13

COUNTY: MORROW DATE: FEB. 1995

CORNER DESIGNATION
EAST 1/4 CORNER

CONDITION REPORT ONLY
 NOT FOUND
 RENEWED
 UNRECORDED
 SURVEYED IN
 REFERENCED OUT

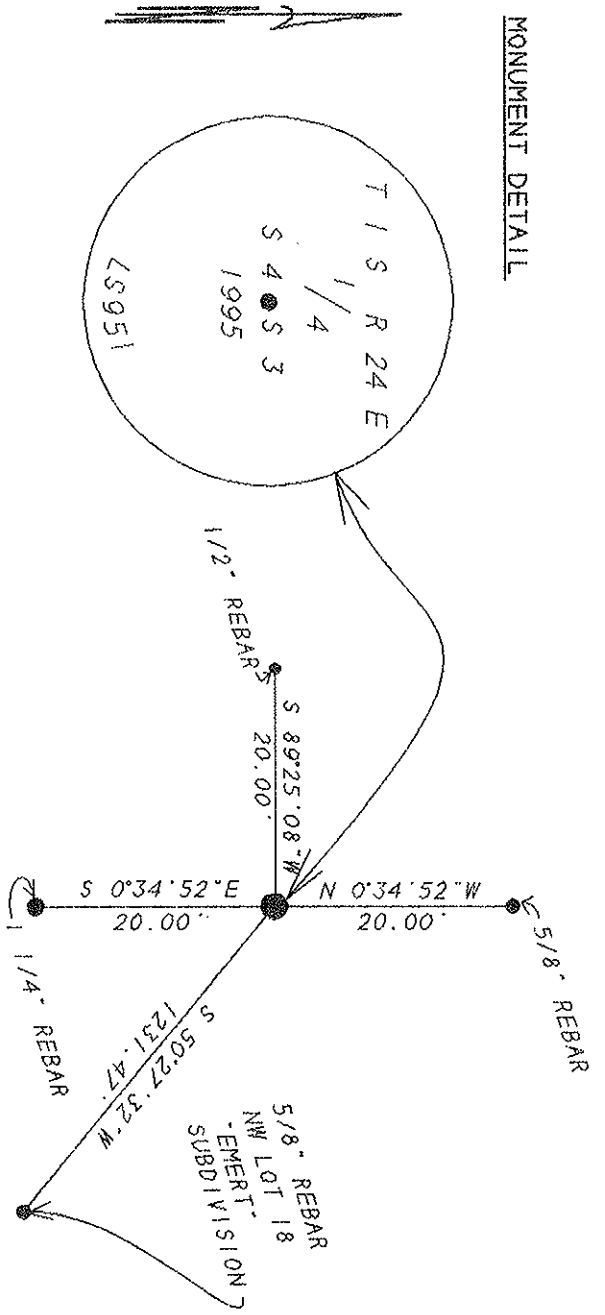
PREVIOUS RENEWALS/SURVEYS, ETC.

ORIGINAL SURVEY BY THOMPSON IN 1867. CONTRACT NO. 119.
HE SET A 18" X 10" X 4" STONE.

MONUMENTS & ACCESSORIES FOUND: Condition and Source

FOUND A STONE 16" X 10" X 4" SET 12" INTO GROUND.

MONUMENT DETAIL



MONUMENT SET (Procedures and Description)

SET A 1" X 30" GALVANIZED PIPE WITH A 2 3/8" BRASS CAP STAMPED AS ABOVE AT THE LOCATION OF ABOVE FOUND STONE. 1 BURIED FOUND STONE ALONG THE EAST SIDE OF BRASS CAP. SEE MY SURVEY COUNTY NO. B-1035-E.

NEW ACCESSORIES

- A 1/2" X 24" REBAR BEARS S 89°25'08"W 20.00 FEET.
- A 5/8" X 30" REBAR BEARS N 0°34'52"W 20.00 FEET.
- A 1 1/4" X 32" REBAR BEARS S 0°34'52"E 20.00 FEET.
- A 5/8" X 30" REBAR WITH PLASTIC CAP #951 BEARS S 50°27'32"E 1231.47 FEET. (NW CORNER LOT 18, EMERT SUBDIVISION, 10NE, OREGON.

LOCATION & COMMENTS

FROM THE SE CORNER OF SECTION 4, T1S, R24E, WM, WHICH LIES IN MAIN STREET OF THE TOWN OF 10NE, OREGON, GO NORTH ALONG THE SECTION LINE 1/2 MILE TO CORNER.

SURVEYOR'S SEAL

COMPASS DEC _____
 FIRM EDWARDS SURVEYING
 P.O. BOX 763
 HERMISTON, OR. 97838
 PARTY CHIEF D. EDWARDS
 J. COPPOCK
 NOTES _____
 WITNESS J. COPPOCK

RECEIVED BY

Morrow County Surveyor
 Date 2/95
 Rec'd By AE
 No. C-13

REGISTERED PROFESSIONAL LAND SURVEYOR

G. Dennis Edwards

OREGON
 JULY 18, 1971
 G. DENNIS EDWARDS
 951

RENEWS 12/31/95