

CORNER RESTORATION FORM

Township 1 SOUTH Range 24 EAST Section 4 County MORROW

State OREGON Date 3/13/14 Number A-9

Corner Designation : NW CORNER SECTION 4

- Condition Report Only
- Not Found
- Renewed
- Surveyed In
- Referenced

Previous Renewals: original source of corner

ORIGINAL CORNER WAS SET BY D.P. THOMPSON IN 1865

UNDER CONTRACT No. 109, WHICH WAS A POST IN A MOUND OF EARTH WITH CHARRED STAKE WITH PITS AS PER INSTRUCTIONS.

Monument (s) Found: (Condition and Source)

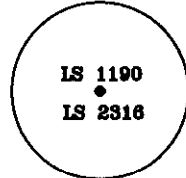
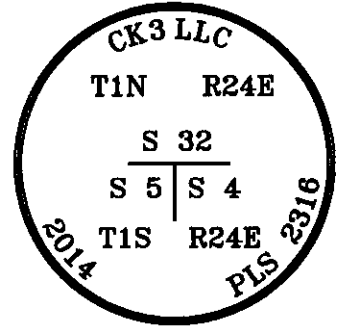
NONE LOCATION FALL IN ROAD.

Accessories Found:

NO ACCESSORIES WERE FOUND.

MONUMENT DETAIL

Found Set



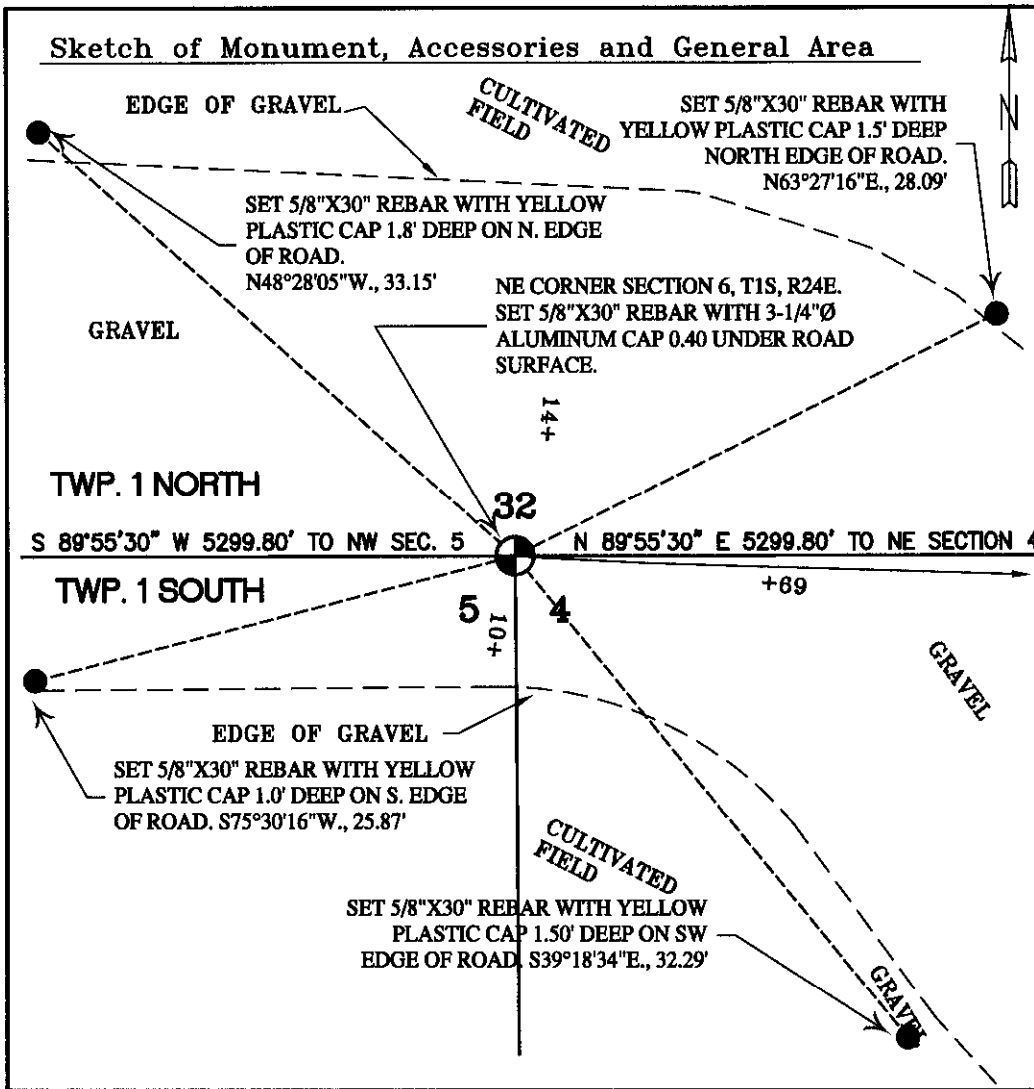
SET 5/8" X 30" REBAR WITH YELLOW PLASTIC CAP REFERENCE

SET 5/8" X 30" REBAR WITH 3-1/4" ALUM CAP AT CORNER

Monument & Accessories Set (Procedure and Description)

SET A 5/8"X30" REBAR WITH A 3-1/4"Ø ALUMINUM CAP MARKED AS SHOWN ABOVE AT PROPORTIONED LOCATION 0.40 BELOW ROAD SURFACE.

SET FOUR REFERENCES AS SHOWN IN THE DIAGRAM BELOW WHICH ARE 5/8"X30" REBARS WITH A YELLOW PLASTIC CAP MARKED AS SHOWN ABOVE.



REGISTERED PROFESSIONAL LAND SURVEYOR

Danny K. Cummings

OREGON
JAN. 21, 1988
DANNY K. CUMMINGS
2316

RENEWS: 12/31/2015

Agency: CK3, LLC
388 SW 5th AVE
ONTARIO, OR 97914

Party Chief D. CUMMINGS
Notekeeper D. CUMMINGS
Witness(s) R. FRITZ
Field Book 0-199
Client MONTY CRUM
Job # SO-02020

COUNTY SURVEYOR FILING INFO

Received 4-14-14
Filed S.K.H.
Survey No. 2014-1699C
Index No. A-9