

CORNER RESTORATION FORM

Township 1 SOUTH Range 24 EAST Section 3 County MORROW

State OREGON Date 3/13/14 Number A-17

Corner Designation : NE CORNER SECTION 3

Condition Report Only
 Not Found
 Renewed
 Surveyed In
 Referenced

Previous Renewals: original source of corner

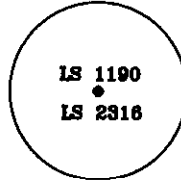
ORIGINAL CORNER WAS SET BY D.P. THOMPSON IN 1865
UNDER CONTRACT No. 109, WHICH WAS A POST IN A MOUND
OF EARTH WITH CHARRED STAKE WITH PITS AS PER
INSTRUCTIONS.

Monument (s) Found: (Condition and Source)
FOUND A FENCE CORNER WITH FENCE RUNNING TO EAST AND
WEST AND TO THE SOUTH WITH OLD PORTIONS OF FENCE TO
THE NORTH. ACCEPTED FENCE AS BEST AVAILABLE EVIDENCE.

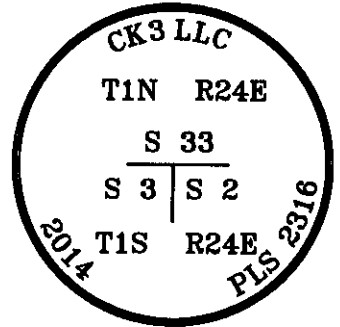
Accessories Found:
NO ACCESSORIES WERE FOUND.

MONUMENT DETAIL

Found Set



SET 5/8" X 30" REBAR WITH YELLOW PLASTIC CAP REFERENCE



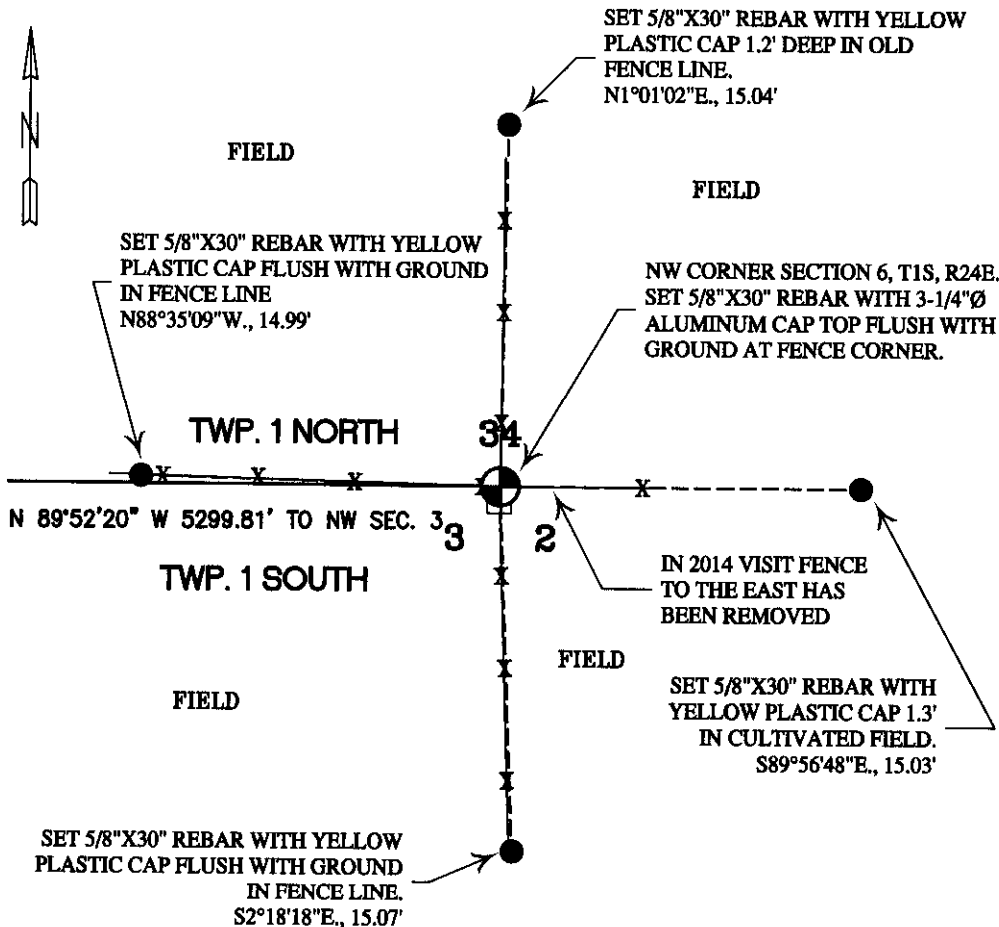
SET 5/8" X 30" REBAR WITH 3-1/4" ALUM CAP AT CORNER

Monument & Accessories Set (Procedure and Description)

SET A 5/8"X30" REBAR WITH A 3-1/4" ALUMINUM CAP MARKED AS SHOWN ABOVE AT FENCE CORNER SET TOP OF CORNER IS AT GROUND SURFACE.

SET FOUR REFERENCES AS SHOWN IN THE DIAGRAM BELOW WHICH ARE 5/8"X30" REBARS WITH A YELLOW PLASTIC CAP MARKED AS SHOWN ABOVE.

Sketch of Monument, Accessories and General Area



REGISTERED PROFESSIONAL LAND SURVEYOR

Danny K. Cummings

OREGON
JAN. 21, 1988
DANNY K. CUMMINGS
2316

RENEWS: 12/31/2015

Agency: CK3, LLC
 388 SW 5th AVE
 ONTARIO, OR 97914

Party Chief D. CUMMINGS

Notekeeper D. CUMMINGS

Witness(s) R. FRITZ

Field Book 0-199

Client MONTY CRUM

Job # SO-02020

COUNTY SURVEYOR FILING INFO

Received 4-14-2014

Filed S.K.H.

Survey No. 2014-1699C

Index No. A-17