

OREGON CORNER RESTORATION FORM

SECTION 34 TOWNSHIP 1 NORTH RANGE 23 EAST Z-15

COUNTY : MORROW DATE 09-2004

CORNER DESIGNATION

S 1/4 COR.

- CONDITION REPORT ONLY
- NOT FOUND
- RENEWED
- UNCOVERED
- SURVEYED IN
- REFERENCED
- X

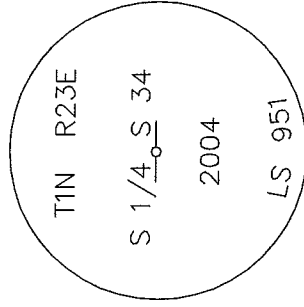
PREVIOUS RENEWALS / SURVEYS, ETC.

ORIGINALLY SURVEYED BY THOMPSON UNDER CONTRACT #119 IN 1867
HE SET 18"X8"X8" STONE.

MONUMENTS AND ACCESSORIES FOUND: CONDITION AND SOURCE

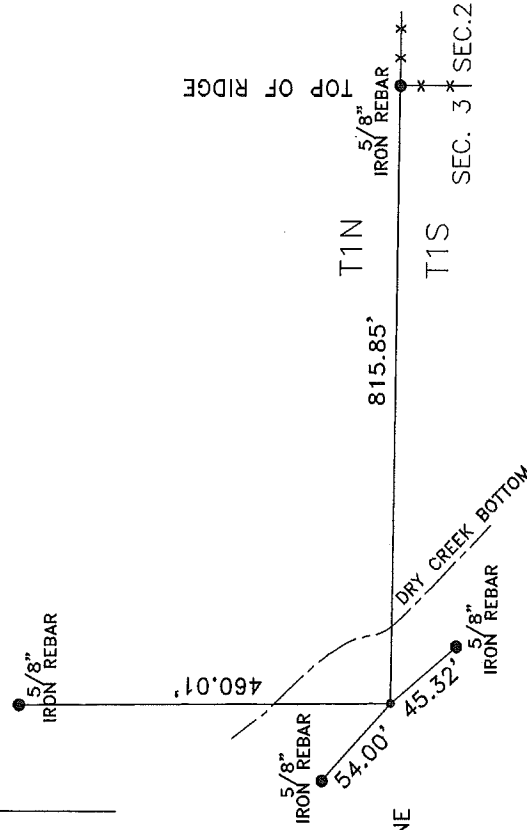
FOUND 18"X8"X8" STONE WITH 1/4 SCRIBED ON IT. IT WAS LYING ON ITS SIDE 80% COVERED WITH DIRT.

MONUMENT DETAIL



NAD 83/91
OREGON NORTH ZONE STATE PLANE
INTERNATIONAL FEET
N: 675187.096
E: 8349205.217

SKETCH



MONUMENT SET (PROCEDURES AND DESCRIPTION)

I SET A 1"X30" IRON PIPE WITH A 2 3/8" BRASS CAP STAMPED AS ABOVE AT THE SURFACE & BURIED THE 18"X8"X8" STONE ON THE NORTH SIDE.

NEW ACCESSORIES FROM WHICH

- A 5/8" IRON REBAR WITH PLASTIC CAP #951 BEARS N 0°25'16" E 460.01 FEET.
- A 5/8" IRON REBAR WITH PLASTIC CAP #951 BEARS N 48°32'08" W 54.00 FEET.
- A 5/8" IRON REBAR WITH PLASTIC CAP #951 BEARS S 40°41'48" E 45.32 FEET.
- A 5/8" IRON REBAR WITH PLASTIC CAP #951 BEARS S 89°31'47" E 815.85 FEET.

LOCATION AND COMMENTS

FROM A FENCE CORNER ON TOP OF A RIDGE WHICH LIES 0.5 MILES NW FROM THE TOP OF "SADDLE BUTTE" GO WEST 815 FEET TO CORNER. IT LIES ABOUT 100 FEET WEST OF THE BOTTOM OF A DEEP DRAW.

COMPASS DEC.

FIRM/AGENCY
EDWARDS SURVEYING
P.O. BOX 763
HERMISTON, OREGON 97838

PARTY CHIEF
CURTIS FAVOREL

NOTES

WITNESS
RICK SMITH

SURVEYOR'S SEAL

REGISTERED
PROFESSIONAL
LAND SURVEYOR

G. Dennis Edwards

OREGON
JULY 16, 1971
G. DENNIS EDWARDS
9.5.1

RENEWES 12/31/2005