

OREGON CORNER RESTORATION FORM

Section 27 Township 1N Range 23E
County Morrow Date November 20, 1997

CORNER DESIGNATION

Condition Report Only
 Not Found
 Renewed
 Unrecorded
 Surveyed In
 Referenced Out

V-17
SE Corner

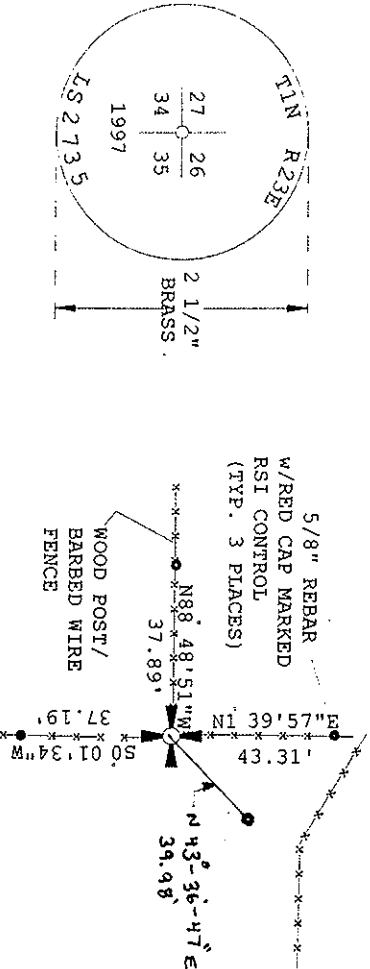
Previous Renewals/Surveys, etc. Originally set under contract #119 in 1867 by Thompson;
He set a charred stake in a raised mound.

Monument(s) & Accessories Found: _____ **(Condition and Source)**

No evidence of original monumentation found. Fence corner found.

Monument Detail

Sketch



Monument Set (Procedures and Description)

Held fence corner. Set 1" x 24" with flared end pipe with brass cap, magnetically detectable monument. Monument set utilizing Trimble 4000SSI GPS receivers with Real Time Kinematic methods.

New Accessories

- 5/8" rebar with red cap marked RSI control bears N 01°39'57"E 43.31' (grid)
- 5/8" rebar with red cap marked RSI control bears N 88°48'51"W 37.89' (grid)
- 5/8" rebar with red cap marked RSI control bears S00°01'34"W 37.19' (grid)
- 5/8" rebar with red cap marked RSI control bears N43°-36'47" E 39.98 (grid)

Location & Comments

NAD 83/91 Oregon North

Surveyor's Seal

Grid coordinates (Int'l. Feet) Firm/Agency Rogers Surveying
 N: 680374.65 Address 2304 N. 1st Street
 E: 8351839.40 Hermiston, OR 97838
 Referenced from Tri Sta. Party Chief E. Todd Pierce
 Saddle Butte Notes _____
 N: 6723388.08 Witness _____
 E: 8351122.09

