

OREGON CORNER RESTORATION FORM

Section 27 Township 1N Range 23E  
County Morrow Date November 20, 1997

CORNER DESIGNATION

Condition Report Only  
 Not Found  
 Renewed  
 Unrecorded  
 Surveyed In  
 Referenced Out

R-17  
NE CORNER

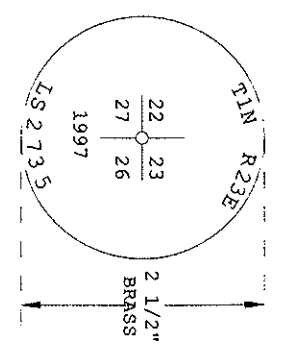
Previous Renewals/Surveys, etc. Originally set under contract #119 in 1867 by Thompson;  
He set a charred stake in a raised sand mound.

Monument(s) & Accessories Found: **(Condition and Source)**

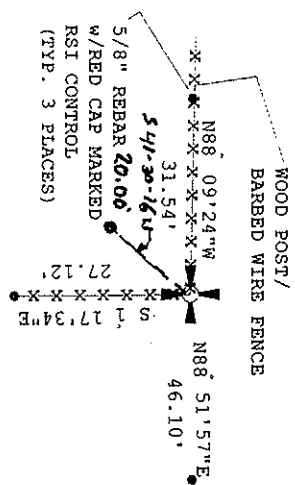
No evidence of original monumentation found. Fence corner post found.

\_\_\_\_\_  
\_\_\_\_\_  
\_\_\_\_\_

Monument Detail



Sketch



Monument Set (Procedures and Description)

Held fence corner. Set 1" X 24" sch. 40 pipe with flared end and 2 1/2 brass  
Cap. Monument set utilizing Trimble 4000SSI GPS receivers with Real Time Kinematic methods.

\_\_\_\_\_  
\_\_\_\_\_  
\_\_\_\_\_

New Accessories

5/8" rebar with red cap marked RSI control bears N 88°09'24"W 31.54' (grid)  
5/8" rebar with red cap marked RSI control bears S 1°17'34"E 27.12' (grid)  
5/8" rebar with red cap marked RSI control bears N 88°51'57"E 46.10' (grid)  
5/8" rebar with red cap marked RSI control bears S 41° 30' 16" E 46.10 (grid)

Surveyor's Seal

Location & Comments  
NAD 83/91 Oregon North Compass Declination 20 1/2°  
Grid coordinates (Int'l. Feet) Firm/Agency Rogers Surveying  
N: 685636.91 Address 2304 N. 1<sup>st</sup> Street  
E: 8351818.79 Referenced from Tri Sta. Hermiston, OR 97838  
Saddle Butte Party Chief E. Todd Pierce  
N: 672388.08 Notes \_\_\_\_\_  
E: 8351122.09 Witness John A. Baalman

