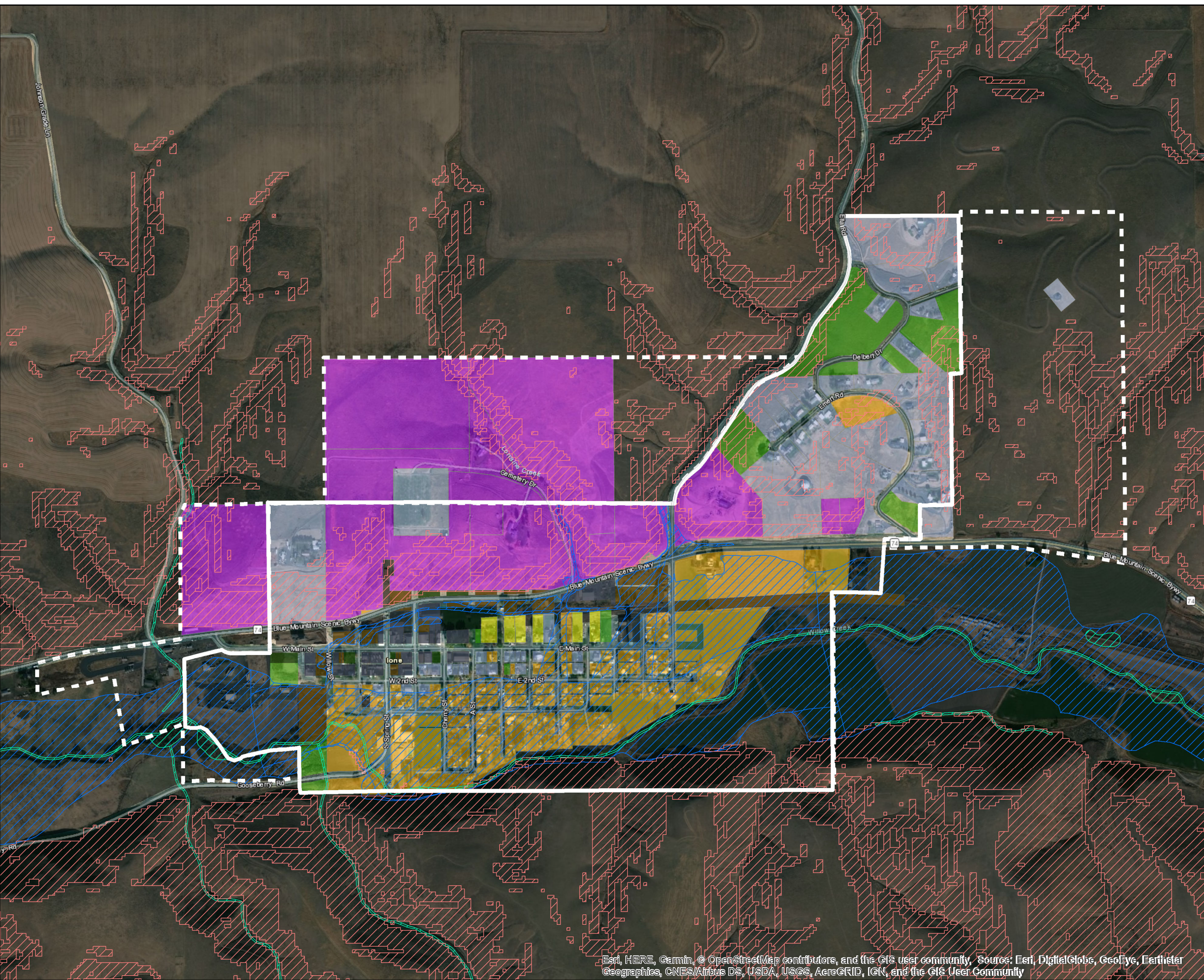


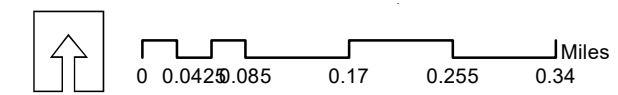


City of Lone Development Status

- Vacant
- Partially Vacant
- Difficult to Serve
- Constrained
- Developed
- Lands in Non-Residential Zones
- Steep Slopes
- Wetlands
- Floodplains
- UGB
- City Limit



Prepared by:
Angelo Planning Group
Date: 4/25/19



Coordinate System:
NAD 1983 HARN StatePlane Oregon North FIPS 3601 Feet Intl

This map is intended for informational purposes only. While this map represents the best data available at the time of publication, APG makes no claims, representations, or warranties as to its accuracy or completeness. Metadata available upon request.