

BEFORE THE MORROW COUNTY COURT  
OF MORROW COUNTY

AN ORDINANCE ADOPTING CHANGES TO  
THE MORROW COUNTY COMPREHENSIVE  
PLAN AND ZONING MAPS AMENDING THE  
CITY OF BOARDMAN URBAN GROWTH  
BOUNDARY AND APPLYING SUBURBAN  
RESIDENTIAL ZONING TO THE .77-ACRE  
ADDED TO THE URBAN GROWTH AREA.

COUNTY ORDINANCE  
NO. MC.05-2008

WHEREAS, ORS 203.035 authorizes Morrow County to exercise authority within the county over matters of County concern; and

WHEREAS, Morrow County adopted a Comprehensive Land Use Plan which was acknowledged by the Land Conservation and Development Commission on January 15, 1986; and

WHEREAS, Mike Allison and the City of Boardman made application to the County for necessary changes to the Comprehensive Plan and Zoning Maps based on errors found during other land use approval processes; and

WHEREAS, the Morrow County Planning Commission held a hearing to review the request on April 29 and May 20, 2008, at the Morrow County School District Building in Lexington, Oregon; and

WHEREAS, the Morrow County Planning Commission unanimously recommended approval of the request and adopted Final Planning Commission Findings of Fact; and

WHEREAS, the Morrow County Court held a hearing to consider the recommendation of the Morrow County Planning Commission on June 18, 2008, at the Port of Morrow Riverfront Center in Boardman, Oregon; and

WHEREAS, the Morrow County Court did consider the testimony and evidence presented to them;

NOW THEREFORE THE COUNTY COURT OF MORROW COUNTY ORDAINS AS FOLLOWS:

Section 1 Title of Ordinance:

This Ordinance shall be known, and may be cited, as the "Boardman 2008 Urban Growth Boundary Change."

Section 2 Affected Document

The Morrow County Comprehensive Plan and Zoning Maps shall be amended as reflected in the attached map identified as Exhibit 1

Section 3 Effective Date


As other land use matters are pending the Morrow County Court does declare an emergency. This ordinance shall be effective on July 9, 2008, following the second reading.

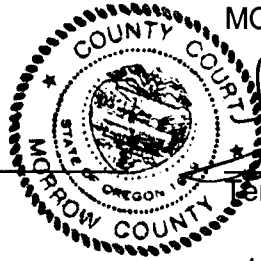
Date of First Reading: July 2, 2008

Date of Second Reading: July 9, 2008

DONE AND ADOPTED BY THE MORROW COUNTY COURT THIS 9<sup>th</sup> DAY OF July, 2008

ATTEST:


  
Bobbi Childers  
County Clerk



MORROW COUNTY COURT:

  
Jerry K. Tallman, Judge

APPROVED AS TO FORM:

  
Ryan Swinburnson  
County Counsel

  
John E. Wenzel, Commissioner

  
Ken Grieb, Commissioner

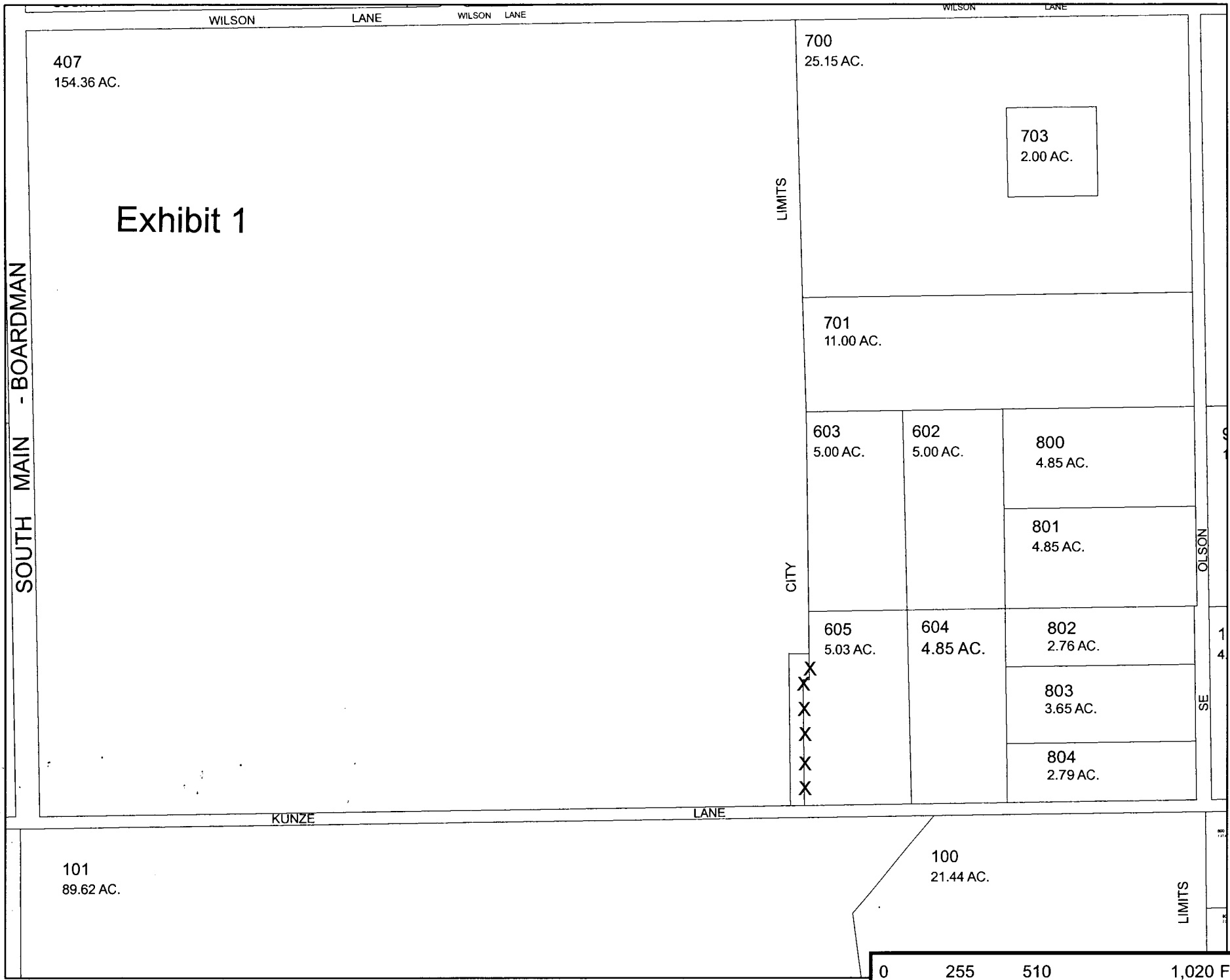


Exhibit 1

