

BEFORE THE MORROW COUNTY COURT
OF MORROW COUNTY

AN ORDINANCE AMENDING THE MORROW
COUNTY COMPREHENSIVE PLAN AND THE
COMPREHENSIVE PLAN MAP TO INCLUDE
A LOCALLY SIGNIFICANT AGGREGATE
RESOURCE SITE

COUNTY ORDINANCE

NO. MC-5-2011

WHEREAS, ORS 203.035 authorizes Morrow County to exercise authority within the county over matters of County concern; and

WHEREAS, Morrow County adopted a Comprehensive Land Use Plan which was acknowledged by the Land Conservation and Development Commission on January 15, 1986; and

WHEREAS, an application was filed by Wade Aylett to include approximately 13 acres of ground as a locally significant resource site and to amend the Morrow County Comprehensive Plan Inventory of Significant Aggregate Sites by a Post Acknowledgment Plan Amendment; and

WHEREAS, the Morrow County Planning Commission held one hearing to review the request on October 25, 2011 at the Port of Morrow Riverfront Center in Boardman, Oregon; and

WHEREAS, the Morrow County Planning Commission unanimously recommended approval of the request and adopted Planning Commission Final Findings of Fact; and

WHEREAS, the Morrow County Court held a hearing to consider the recommendation of the Morrow County Planning Commission on December 7, 2011, at the Morrow County Courthouse in Heppner, Oregon; and

WHEREAS, the Morrow County Court affirmed that the proposed aggregate site meets the requirements under Oregon Administrative Rule whereby a site shall produce less than 500,000 tons of aggregate material and the soils contain less than 35 percent of soils classified as Class I or II on NRCS maps; and

WHEREAS, the Morrow County Court deemed the site at the subject property a locally significant aggregate site.

NOW THEREFORE THE COUNTY COURT OF MORROW COUNTY ORDAINS AS FOLLOWS:

Section 1 Title of Ordinance:

This Ordinance shall be known, and may be cited, as the "2011 Aylett Quarry Locally Significant Site Comprehensive Plan and Map Amendment."

Section 2 Affected Documents:

The Morrow County Comprehensive Plan and the Morrow County Comprehensive Plan Map are amended with a text amendment in the Goal 5 Analysis Chapter Aggregate Sites List.

1. Text Amendment: Insert the following on page 102 of the Comprehensive Plan:
Site/Permit Number TBD Type of Material: Quarry Rock County Zone Designation:
EFU Remarks: Locally Significant Goal 5 Designation: n/a
2. Map Amendment: The Morrow County Comprehensive Plan Aggregate Resources Map will be amended to indicate the site as shown on the attached Boundary Map.

Section 3 Effective Date


This ordinance shall be effective on January 1, 2012.

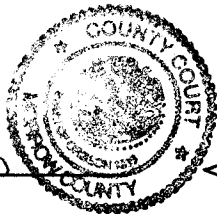
Date of First Reading: December 21, 2011

Date of Second Reading: December 21, 2011

DONE AND ADOPTED BY THE MORROW COUNTY COURT THIS 21st DAY OF
DECEMBER, 2011

ATTEST:

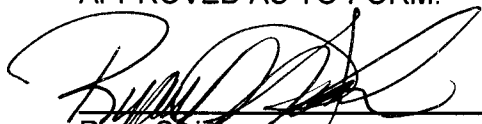

Bobbi Childers
County Clerk



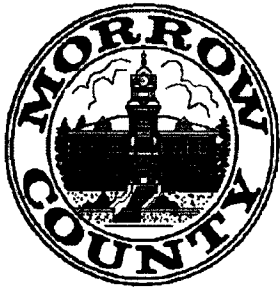

Terry K. Tallman, Judge


Ken Grieb, Commissioner

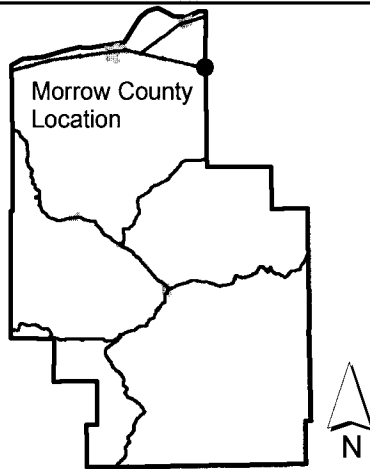
APPROVED AS TO FORM:


Ryan Swinburnson
County Counsel
MORROW COUNTY COURT:


Leann Rea, Commissioner






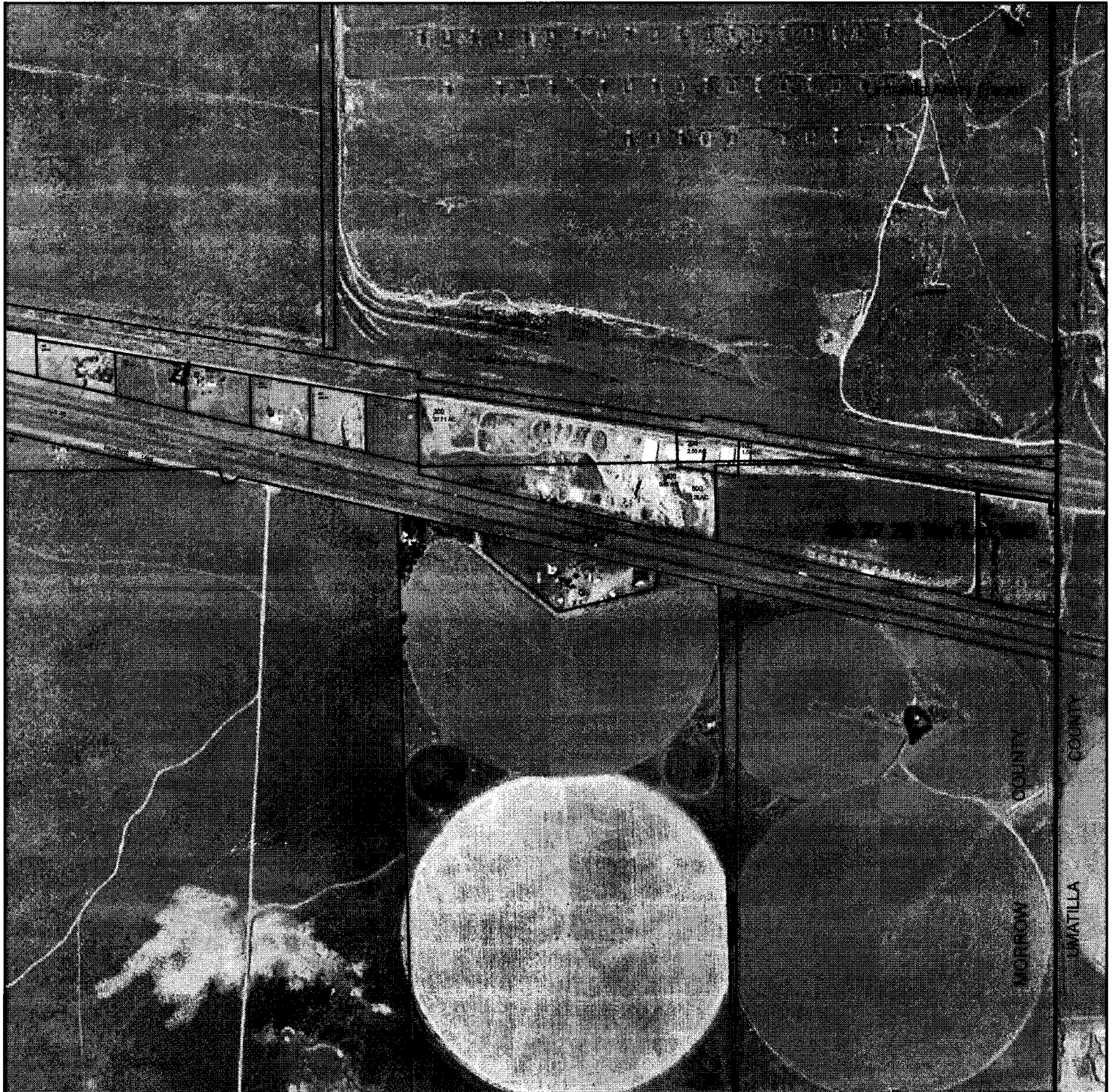
Morrow County Planning Department
October 2011
Map for Reference Purposes Only



Vicinity Map

CUP-N-289
AC-050-11
AC(M)-051-11

-  Subject Property
-  Tax Lot
-  Morrow Boundary



MORROW COUNTY, OREGON **CJ2011-0162**
Commissioners' Journal **12/27/2011 09:06:21 AM**



2011-0162

I, Bobbi Childers, County Clerk for Morrow County, Oregon, certify that the instrument identified herein was recorded in the Clerk records.

Bobbi Childers - County Clerk

