

M-26366

FILED  
BARBARA BLOODSWORTH  
Morrow County Clerk

BEFORE THE MORROW COUNTY COURT  
OF MORROW COUNTY, OREGON

FEB 25 1986

AN ORDINANCE AMENDING THE COMPREHENSIVE )  
LAND USE PLAN DESIGNATION AND ZONING )  
CLASSIFICATION FOR CERTAIN LAND IN THE )  
UNINCORPORATED AREAS OF MORROW COUNTY, )  
OREGON, AND DECLARING AN EMERGENCY )

ORDINANCE NO. MC-C-1-86

The County of Morrow does ordain as follows:

WHEREAS, Morrow County adopted a Comprehensive Land Use Plan on January 15, 1986; and

WHEREAS, notice of hearing was given in accordance with law; and

WHEREAS, the hearing on the proposed redesignations were held; and

WHEREAS, LCDC found the plan and zoning designations applied to certain lands in Morrow County to not be in compliance with Statewide Planning Goals; and

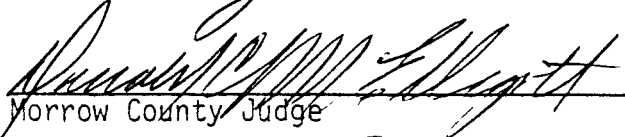
WHEREAS, it now appears to the Court that the Plan and Zoning Ordinance with these amendments are now in an acknowledgeable form in conformance with ORS Chapter 197 and 215;

NOW THEREFORE, be it ordered by the Morrow County Court that:

1. All land within the East Boardman Exception identified by the diagonal lines drawn on the attached map (Exhibit A) be designated Small Farm and zoned SF-40.

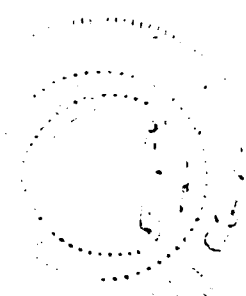
As it is necessary for the health, welfare, safety and convenience of the Citizens of Morrow County, an emergency exists and this Ordinance shall take effect immediately upon the unanimous vote of the County Court and attestation by the County Clerk.

Dated this 25 day of February, 1986.

  
Morrow County Judge

  
Morrow County Commissioner

  
Morrow County Commissioner



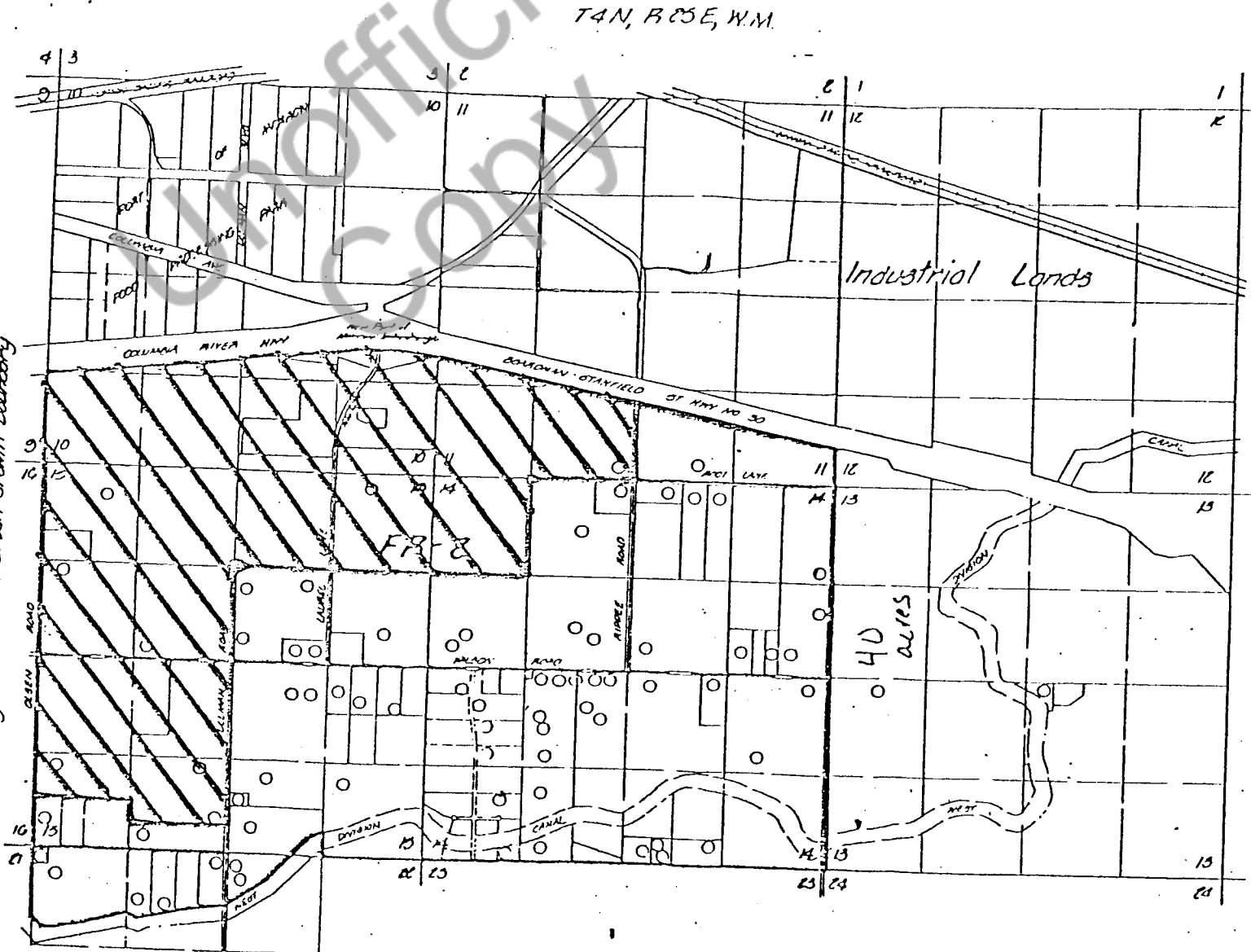
ATTEST:

  
Morrow County Clerk

EXHIBIT A

East Boardman Exception

City of Boardman Urban Growth Boundary



T4N, R25E, W.M.



STATE OF OREGON  
County of Morrow

} ss 134256  
Indexed

I hereby certify that the within  
instrument was received for record.

on 03-05-86 at 11:59 A.M.

and assigned No. 26366

in the Microfilm Records of said  
county

Witness My Hand and Seal of County  
Affixed

Barbara Bloodsworth  
County Clerk

By *Donald M. Letmann*  
Deputy

Unofficial  
Copy