

## DIVISION MISC. SEWING

- 1212: ADULT
- 1213: YOUTH 14-17
- 1214: YOUTH 7-13
- 1215: PROFESSIONAL
- 1216: 70 AND OVER
- 1217: BEGINNER ADULTS

### CLASS Misc. Sewing Projects (not Clothing)

- 01: Infant Layette Items (not previously listed)
- 02: Aprons
- 03: Napkins, Table Runners, Table Cloths
- 04: Pillow, Pillowcases, Blankets
- 05: Bags-Backpacks, Laundry, Purses, etc.
- 06: Wall Hangings, Flags, Windsocks, Banners
- 07: Appliance Covers, Computer Covers
- 08: Dishcloth, Dishtowel, Pot Lifter, Towel
- 09: Tortilla Warmer
- 10: Other

## DIVISION WEARABLE ART

- 1218: ADULT
- 1219: YOUTH 14-17
- 1220: YOUTH 7-13
- 1221: PROFESSIONAL
- 1222: 70 AND OVER
- 1223: BEGINNER ADULTS

**CLASS Wearable Art**- specially handmade garments. May include: hand beading, sequins, patchwork, appliqué, fabric painting, and other creative clothing articles.

- 01: Any special garment such as Halloween Costume, Santa Suit, etc.
- 02: Women's Decorated Garment
- 03: Men's Decorated Garment
- 04: Child's Decorated Garment
- 05: Infant, Toddler Decorated Garment
- 06: Enhanced Clothing Using Machine Embroidery. The clothing article is store bought, but enhanced by the exhibitor.

## DIVISION DOLL CLOTHES

- 1224: ADULT
- 1225: YOUTH 14-17
- 1226: YOUTH 7-13
- 1227: PROFESSIONAL
- 1228: 70 AND OVER
- 1229: BEGINNER ADULTS

### CLASS

- 01: Large Doll
- 02: Small Doll (Barbie, small fashion)

## DIVISION NEW FROM OLD

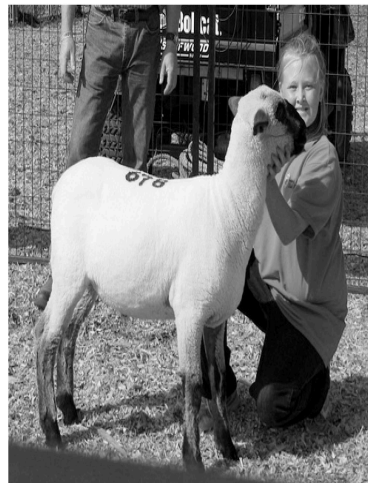
- 1230: ADULT
- 1231: YOUTH 14-17
- 1232: YOUTH 7-13
- 1233: PROFESSIONAL
- 1234: 70 AND OVER
- 1235 BEGINNER ADULTS

### CLASS (can be store bought originally)

- 01: Recycled Article Remade Into Something New (i.e. pants made into a bag or apron) Please indicate what it was before and is now. (A before picture of your item would be a bonus.)
- 02: Made Over Clothing (i.e. resized and or significantly changed clothing, to make it wearable.)
- 03: Repair Article of Clothing or Cloth Article REQUIRED: Please indicate the area of repair.



Join UEC in supporting the Morrow County Fair  
& Our Local 4-H & FFA Youth At The Livestock Auction



## Umatilla Electric Co-op

400 NE Eldrige Dr.  
Boardman, OR 97818  
Phone: 541-481-2220

750 W. Elm Ave.  
Hermiston, OR 97838  
Phone: 541-567-6414

Toll Free: 800-452-2273

[www.umatillaelectric.com](http://www.umatillaelectric.com)

24 Hour Emergencies-Power Outages (888) 465-5701

**UEC** UMATILLA  
ELECTRIC  
COOPERATIVE  
A Touchstone Energy Cooperative